
Product Datasheet

Chicken IgG F(c) Fluorescein Antibody (orb346056)

Description

Chicken IgG F(c) Fluorescein Antibody

Conjugation

FITC

Tested

SDS-PAGE

Applications
Preservatives

0.01% (w/v) Sodium Azide

Form/Appearance

Lyophilized

Concentration

1.0 mg/mL

Storage

Store vial at 4° C prior to restoration. For extended storage aliquot contents and freeze at -20° C or below. Avoid cycles of freezing and thawing. Centrifuge product if not completely clear after standing at room temperature. This product is stable for several weeks at 4° C as an undiluted liquid. Dilute only prior to immediate use.

Note

For research use only

Application notes

CHICKEN IgG F(c) fragment Fluorescein conjugated has been tested by SDS-PAGE and is designed for immunofluorescence microscopy, fluorescence based plate assays (FLISA) and fluorescent western blotting. This product is also suitable for multiplex analysis, including multicolor imaging, utilizing various commercial platforms.

Isotype

IgG F(c)

Purity

This product was prepared from normal serum by delipidation, salt fractionation and ion change chromatography followed by papain digestion and extensive dialysis against the buffer stated above. Assay by immunoelectrophoresis resulted in a single precipitin arc against anti-Fluorescein, anti-Chicken IgG, anti-Chicken IgG F(c) and anti-Chicken Serum. No reaction was observed against anti-Chicken IgG F(ab')₂ or anti-Papain.

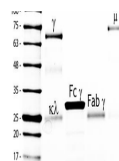
Source

Chicken

Expiration Date

12 months from date of receipt.

10a M 1 2 3 4



SDS-PAGE of
Chicken
IgG/IgY
Whole
Molecu...