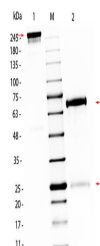


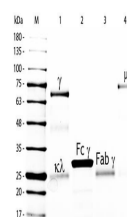
Product Datasheet

Chicken IgG Antibody (orb346050)

Description	Chicken IgG Antibody
Conjugation	Unconjugated
Tested Applications	ELISA, IHC, SDS-PAGE, WB
Preservatives	0.01% (w/v) Sodium Azide
Form/Appearance	Lyophilized
Concentration	10.0 mg/mL
Storage	Store vial at 4° C prior to restoration. Restore with deionized water (or equivalent). For extended storage aliquot contents and freeze at -20° C or below. Avoid cycles of freezing and thawing. Centrifuge product if not completely clear after standing at room temperature. This product is stable for several weeks at 4° C as an undiluted liquid. Dilute only prior to immediate use. Expiration date is one (1) year from date of restoration.
Note	For research use only
Application notes	Chicken IgG whole molecule has been tested in SDS-Page and can be utilized as a control or standard reagent in Western Blotting and ELISA experiments.
Isotype	IgG
Purity	Chicken IgG whole molecule was prepared from normal serum by a multi-step process which includes delipidation, salt fractionation and ion exchange chromatography followed extensive dialysis against the buffer stated above. Chicken IgG whole molecule assayed by immunoelectrophoresis resulted in a single precipitin arc against anti-Chicken IgG and anti-Chicken Serum.
Source	Chicken
Dilution Range	ELISA: User Optimized, IHC: User Optimized, WB: User Optimized
Expiration Date	12 months from date of receipt.



SDS PAGE of Chicken IgG/IgY Whole Molecu...



SDS-PAGE of Chicken IgG/IgY Whole Molecu...