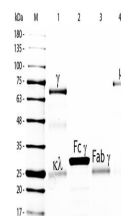


Product Datasheet

Chicken IgG Rhodamine Antibody (orb346044)

Description	Chicken IgG Rhodamine Antibody
Conjugation	TRITC
Tested Applications	SDS-PAGE
Preservatives	0.01% (w/v) Sodium Azide
Form/Appearance	Lyophilized
Concentration	1.0 mg/mL
Storage	Store vial at 4° C prior to restoration. For extended storage aliquot contents and freeze at -20° C or below. Avoid cycles of freezing and thawing. Centrifuge product if not completely clear after standing at room temperature. This product is stable for several weeks at 4° C as an undiluted liquid. Dilute only prior to immediate use.
Note	For research use only
Application notes	CHICKEN IgG whole molecule Rhodamine conjugated has been tested by SDS-PAGE and is designed for immunofluorescence microscopy, fluorescence based plate assays (FLISA) and fluorescent western blotting. This product is also suitable for multiplex analysis, including multicolor imaging, utilizing various commercial platforms.
Isotype	IgG
Purity	This product was prepared from normal serum by delipidation, salt fractionation, ion exchange chromatography followed by extensive dialysis against the buffer stated above. Assay by immunoelectrophoresis resulted in a single precipitin arc against anti-Chicken IgG and anti-Chicken Serum.
Source	Chicken
Expiration Date	12 months from date of receipt.



SDS-PAGE of
Chicken
IgG/IgY
Whole
Molecu...