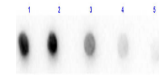


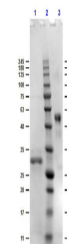
## Product Datasheet

### Bovine IgG F(c) Antibody (orb345990)

<b>Description</b>	Bovine IgG F(c) Antibody
<b>Conjugation</b>	Unconjugated
<b>Tested Applications</b>	DOT, SDS-PAGE
<b>Preservatives</b>	0.01% (w/v) Sodium Azide
<b>Form/Appearance</b>	Liquid (sterile filtered)
<b>Concentration</b>	1.0 mg/mL
<b>Storage</b>	Store vial at 4° C prior to opening. This product is stable 4° C as an undiluted liquid. Dilute only prior to immediate use. For extended storage mix with an equal volume of glycerol, aliquot contents and freeze at -20° C or below. Avoid cycles of freezing and thawing.
<b>Note</b>	For research use only
<b>Application notes</b>	Bovine IgG F(c) has been tested in SDS-Page and Dot Blot and can be utilized as a control or standard reagent in Western Blotting and ELISA experiments.
<b>Isotype</b>	IgG F(c)
<b>Purity</b>	This product was prepared from normal serum by a multi-step process which includes delipidation, salt fractionation, ion exchange chromatography and papain digestion followed by chromatographic separation and extensive dialysis against the buffer stated above. Assay by immunoelectrophoresis resulted in a single precipitin arc against anti-Bovine Serum, anti-Bovine IgG and anti-Bovine IgG F(c). No reaction was observed against anti-Bovine IgG F(ab') <sub>2</sub> or anti-Papain.
<b>Source</b>	Bovine
<b>Expiration Date</b>	12 months from date of receipt.



Dot Blot of Bovine IgG F(c) Fragment. La...



SDS-PAGE for Bovine IgG F(c) Fragment. L...