
Product Datasheet

RFP antibody (Biotin) (orb345913)

Description

RFP antibody (Biotin)

Species/Host

Gallus

Reactivity

Other

Conjugation

Biotin

Tested Applications

ELISA, IF, WB

Immunogen

The immunogen is a Red Fluorescent Protein (RFP) fusion protein corresponding to the full length amino acid sequence (234aa) derived from the mushroom polyp coral *Discosoma*.

Preservatives

0.01% (w/v) Sodium Azide

Form/Appearance

Lyophilized

Concentration

1.0 mg/mL

Storage

Store vial at 4° C prior to restoration. For extended storage aliquot contents and freeze at -20° C or below. Avoid cycles of freezing and thawing. Centrifuge product if not completely clear after standing at room temperature. This product is stable for several weeks at 4° C as an undiluted liquid. Dilute only prior to immediate use.

Note

For research use only

Application notes

Anti-RFP is designed to detect recombinant RFP. This antibody has been tested to detect RFP by immunoblotting and immunofluorescence and is suitable for use in immunohistochemistry. Use either alkaline phosphatase or peroxidase conjugated polyclonal anti-RFP to detect RFP or RFP containing proteins on western blots. Optimal titers for applications should be determined by the researcher. This product shows optimal performance by western blot.

Isotype

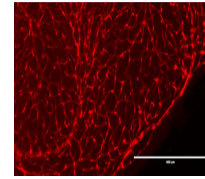
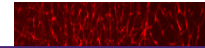
IgY

Clonality

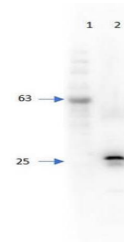
Polyclonal

Purity

RFP Antibody was prepared from egg yolks by a multi-step process which includes filtration, delipidation, salt fractionation and extensive dialysis against the buffer stated above. RFP Antibody was tested by western blot and immunoelectrophoresis against anti-biotin, anti-chicken serum, and RFP.

Uniprot ID
Q9U6Y8


Immunofluorescence Microscopy of Chicken...



Western Blot of Chicken Anti-RFP Antibod...