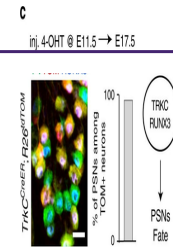


---

## Product Datasheet

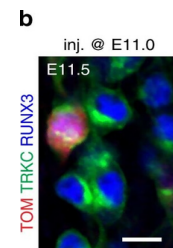
### RFP antibody (orb345911)

<b>Description</b>	RFP antibody
<b>Species/Host</b>	Gallus
<b>Reactivity</b>	Other
<b>Conjugation</b>	Unconjugated
<b>Tested Applications</b>	ELISA, WB
<b>Immunogen</b>	Red Fluorescent Protein (RFP) fusion protein corresponding to the full length amino acid sequence (234aa) derived from the mushroom polyp coral <i>Discosoma</i> .
<b>Preservatives</b>	0.01% (w/v) Sodium Azide
<b>Form/Appearance</b>	Liquid (sterile filtered)
<b>Concentration</b>	1.0 mg/mL
<b>Storage</b>	Store vial at -20° C or below prior to opening. This vial contains a relatively low volume of reagent (25 µL). To minimize loss of volume dilute 1:10 by adding 225 µL of the buffer stated above directly to the vial. Recap, mix thoroughly and briefly centrifuge to collect the volume at the bottom of the vial. Use this intermediate dilution when calculating final dilutions as recommended below. Store the vial at -20°C or below after dilution. Avoid cycles of freezing and thawing.
<b>Note</b>	For research use only
<b>Application notes</b>	Anti-RFP is designed to detect recombinant RFP. Anti-RFP antibody has been tested by ELISA, SDS-PAGE, and western blot to detect RFP. Use either alkaline phosphatase or peroxidase conjugated polyclonal anti-RFP to detect RFP or RFP containing proteins on western blots. Optimal titers for applications should be determined by the researcher. This product shows optimal performance by western blot.
<b>Isotype</b>	IgY
<b>Clonality</b>	Polyclonal
<b>Purity</b>	RFP Antibody was prepared from egg yolks by a multi-step process which includes filtration, delipidation, salt fractionation and extensive dialysis against the buffer stated above. RFP Antibody was tested by western blot.
<b>Uniprot ID</b>	<b>Q9U6Y8</b>
<b>Dilution Range</b>	ELISA: 1:10,000, WB: 1:2,000 - 1:3,000
<b>Expiration Date</b>	12 months from date of receipt.

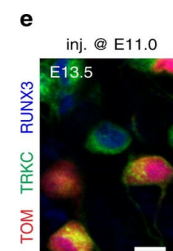


Differential expression of TRKC in PSNs

...



PSNs with high TRKC levels preferentiall...



PSNs with high TRKC levels preferentiall...