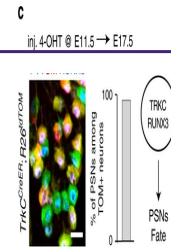
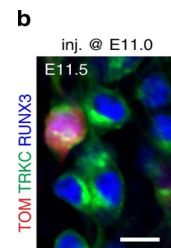

Product Datasheet

RFP antibody (orb345910)

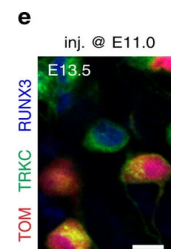
Description	RFP antibody
Species/Host	Gallus
Reactivity	Other
Conjugation	Unconjugated
Tested Applications	ELISA, WB
Immunogen	The immunogen is a Red Fluorescent Protein (RFP) fusion protein corresponding to the full length amino acid sequence (234aa) derived from the mushroom polyp coral <i>Discosoma</i> .
Preservatives	0.01% (w/v) Sodium Azide
Form/Appearance	Liquid (sterile filtered)
Concentration	1.0 mg/mL
Storage	Store vial at -20° C prior to opening. Aliquot contents and freeze at -20° C or below for extended storage. Avoid cycles of freezing and thawing. Centrifuge product if not completely clear after standing at room temperature. This product is stable for several weeks at 4° C as an undiluted liquid. Dilute only prior to immediate use.
Note	For research use only
Application notes	Anti-RFP is designed to detect recombinant RFP. Anti-RFP antibody has been tested by ELISA, SDS-PAGE, and western blot to detect RFP. Use either alkaline phosphatase or peroxidase conjugated polyclonal anti-RFP to detect RFP or RFP containing proteins on western blots. Optimal titers for applications should be determined by the researcher. This product shows optimal performance by western blot.
Isotype	IgY
Clonality	Polyclonal
Purity	RFP Antibody was prepared from egg yolks by a multi-step process which includes filtration, delipidation, salt fractionation and extensive dialysis against the buffer stated above. RFP Antibody was tested by western blot.
Uniprot ID	Q9U6Y8
Dilution Range	ELISA: 1:10,000, WB: 1:1,000 - 1:3,000
Expiration Date	12 months from date of receipt.



Differential expression of TRKC in PSNs
...



PSNs with high TRKC levels preferentiall...



PSNs with high TRKC levels preferentiall...