

## Product Datasheet

### Tubulin alpha antibody (Biotin) (orb345885)

## Description

Tubulin alpha antibody (Biotin)

### Species/Host

Rabbit

### Reactivity

Bovine, Gallus, Goat, Human, Mouse, Rat, Sheep

### Conjugation

Biotin

### Tested

ELISA, IF, IHC, WB

### Applications

### Immunogen

Anti-Tubulin Loading Control Antibody was prepared from whole rabbit serum produced by repeated immunizations with a synthetic peptide corresponding to the C-Terminal region near amino acids 425-451 of Human alpha Tubulin.

### Preservatives

0.01% (w/v) Sodium Azide

### Form/Appearance

Lyophilized

### Concentration

0.61 mg/ml

### Storage

Store Anti-Tubulin Loading Control Antibody at 4° C prior to restoration. For extended storage aliquot Control Antibody and freeze at -20° C or below. Avoid cycles of freezing and thawing. Centrifuge Tubulin Antibody if not completely clear after standing at room temperature. This product is stable for several weeks at 4° C as an undiluted liquid. Dilute only prior to immediate use.

### Note

For research use only

### Application notes

Anti-Tubulin Loading Control Antibody has been tested for use in ELISA and western blot. Specific conditions for reactivity should be optimized by the end user. Expect a band at ~50 kDa in size corresponding to alpha tubulin by western blotting in the appropriate cell lysate or extract.

### Isotype

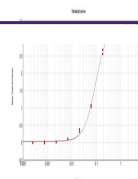
IgG

### Clonality

Polyclonal

### Purity

Anti-Tubulin Loading Control Antibody is directed against human alpha Tubulin protein. The Loading Control Antibody was affinity purified from monospecific antiserum by immunoaffinity purification. A BLAST analysis was used to suggest that this antibody would react with alpha Tubulin from a wide range of organisms, including avian, mammalian aquatic, parasitic and alga sources based on 100% homology for the immunogen sequence. Cross reactivity will occur with all isoforms of alpha tubulin. Such broad reactivity



ELISA  
Results of  
Purified  
Rabbit Anti-  
Al...

Biorbyt Ltd.

7 Signet Court, Swann's Road, Cambridge, CB5 8LA, United Kingdom

Email: [info@biorbyt.com](mailto:info@biorbyt.com) | Phone: +44 (0) 1223 859-353 | Fax: +44 (0)1223 280 240

Biorbyt LLC.

68 TW Alexander Drive<br>Research Triangle Park<br>Durham, North Carolina<br>27709, United States

Email: [info@biorbyt.com](mailto:info@biorbyt.com) | Phone: +1 (415) 906-5211 | Fax: +1 (415) 651-8558