

## Product Datasheet

### VSV-G Epitope Tag Antibody Biotin Conjugated (orb345883)

<b>Catalog Number</b>	orb345883
<b>Description</b>	VSV-G Epitope Tag antibody (Biotin)
<b>Species/Host</b>	Rabbit
<b>Conjugation</b>	Biotin
<b>Tested Applications</b>	ELISA, IHC, WB
<b>Immunogen</b>	This affinity purified antibody was prepared from whole rabbit serum produced by repeated immunizations with a synthetic peptide corresponding amino acids near the carboxy terminal of vesicular stomatitis virus glycoprotein (VSV-G).
<b>Preservatives</b>	0.01% (w/v) Sodium Azide
<b>Form/Appearance</b>	Lyophilized
<b>Concentration</b>	1.0 mg/mL
<b>Storage</b>	Store vial at 4° C prior to restoration. For extended storage aliquot contents and freeze at -20° C or below. Avoid cycles of freezing and thawing. Centrifuge product if not completely clear after standing at room temperature. This product is stable for several weeks at 4° C as an undiluted liquid. Dilute only prior to immediate use.
<b>Note</b>	For research use only

#### Biorbyt Ltd.

7 Signet Court, Swann's Road,  
Cambridge, CB5 8LA, United Kingdom  
Email: [info@biorbyt.com](mailto:info@biorbyt.com), [support@biorbyt.com](mailto:support@biorbyt.com)  
Phone: [+44 \(0\) 1223 859-353](tel:+44(0)1223859353) | Fax: [+1 \(415\) 651-8558](tel:+1(415)6518558)

#### Biorbyt LLC.

68 TW Alexander Drive,  
Durham, NC, 27713, United States  
Email: [info@biorbyt.com](mailto:info@biorbyt.com), [support@biorbyt.com](mailto:support@biorbyt.com)  
Phone: [+1 \(415\) 906-5211](tel:+1(415)9065211) | Fax: [+1 \(415\) 651-8558](tel:+1(415)6518558)

## Application notes

This affinity purified antibody has been tested for use in ELISA and western blot and is suitable by immunofluorescence microscopy. Specific conditions for reactivity should be optimized by the end user. For standard indirect immunofluorescence assays, we recommend paraformaldehyde fixation with detergent permeabilization of cells infected with VSV or transfected with the wild-type VSV-G protein. Staining is quite clean and specific for both sources of the G protein when diluted at least 1/200. At higher concentrations, a filamentous background staining may be present.

## Isotype

IgG

## Clonality

Polyclonal

## Antibody Type

Primary Antibody

## Purity

This affinity purified antibody is directed against VSV-G protein. The product was affinity purified from monospecific antiserum by immunoaffinity purification followed by biotin conjugation, subsequent purification and exhaustive dialysis against the buffer stated above.

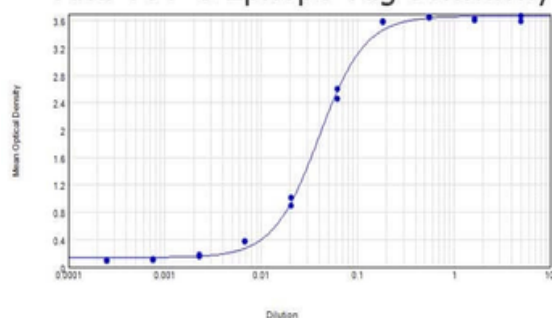
## Dilution Range

ELISA: 1:10,000 - 1:50,000, IHC: 1:1,000 - 1:5,000, WB: 1:2,000 - 1:10,000

## Expiration Date

12 months from date of receipt.

Anti-VSV-G Epitope Tag Sensitivity



ELISA results of purified Rabbit anti-VSV-G Antibody Biotin Conjugated tested against BSA-conjugated peptide of immunizing peptide. Each well was coated in duplicate with 0.1 µg of conjugate. The starting dilution of antibody was 5 µg/ml and the X-axis represents the Log10 of a 3-fold dilution. This titration is a 4-parameter curve fit where the IC50 is defined as the titer of the antibody. Assay performed using 3% fish gelatin as blocking buffer, Streptavidin Peroxidase Conjugated (p/n orb348767) and TMB substrate p/n orb348651.

## Biorbyt Ltd.

7 Signet Court, Swann's Road,  
Cambridge, CB5 8LA, United Kingdom  
Email: [info@biorbyt.com](mailto:info@biorbyt.com), [support@biorbyt.com](mailto:support@biorbyt.com)  
Phone: [+44 \(0\) 1223 859-353](tel:+44201223859353) | Fax: [+1 \(415\) 651-8558](tel:+14156518558)

## Biorbyt LLC.

68 TW Alexander Drive,  
Durham, NC, 27713, United States  
Email: [info@biorbyt.com](mailto:info@biorbyt.com), [support@biorbyt.com](mailto:support@biorbyt.com)  
Phone: [+1 \(415\) 906-5211](tel:+14159065211) | Fax: [+1 \(415\) 651-8558](tel:+14156518558)