
Product Datasheet

RFP antibody (Biotin) (orb345878)

Description

RFP antibody (Biotin)

Species/Host

Rabbit

Reactivity

Other

Conjugation

Biotin

Tested

ELISA, IHC, WB

Applications
Immunogen

The immunogen is a Red Fluorescent Protein (RFP) fusion protein corresponding to the full length amino acid sequence (234aa) derived from the mushroom polyp coral *Discosoma*.

Preservatives

0.01% (w/v) Sodium Azide

Form/Appearance

Lyophilized

Concentration

1.0 mg/mL

Storage

Store vial at 4° C prior to restoration. For extended storage aliquot contents and freeze at -20° C or below. Avoid cycles of freezing and thawing. Centrifuge product if not completely clear after standing at room temperature. This product is stable for several weeks at 4° C as an undiluted liquid. Dilute only prior to immediate use.

Note

For research use only

Application notes

Polyclonal anti-RFP is designed to detect RFP and its variants. This rabbit anti-RFP Antibody Biotin Conjugated antibody has been tested by ELISA and western blot. This product can be used to detect RFP by ELISA (sandwich or capture) for the direct binding of antigen. Biotin conjugated polyclonal anti-RFP used in a sandwich ELISA with unconjugated anti-RFP is well suited to titrate RFP in solution. The detection antibody conjugated to biotin is subsequently reacted with streptavidin conjugated HRP (code # S000-03). Optimal titers for applications should be determined by the researcher.

Isotype

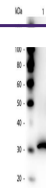
IgG

Clonality

Polyclonal

Purity

This product was prepared from monospecific antiserum by immunoaffinity chromatography using Red Fluorescent Protein (*Discosoma*) coupled to agarose beads followed by solid phase adsorption(s) to remove any unwanted reactivities. Expect reactivity against RFP and its variants: mCherry, tdTomato, mBanana, mOrange, mPlum, mOrange and mStrawberry. Assay by immunoelectrophoresis resulted in a single precipitin arc



Western blot of Biotin conjugated Rabbit...