
Product Datasheet

COL1A1 antibody (orb345868)

Description

COL1A1 antibody

Species/Host

Rabbit

Reactivity

Human, Mouse, Rat

Conjugation

Biotin

Tested Applications

DOT, ELISA, FC, IHC, IP, Multiplex Assay, WB

Immunogen

Collagen Type I from human and bovine placenta.

Preservatives

0.01% (w/v) Sodium Azide

Form/Appearance

Lyophilized

Concentration

1.0 mg/mL

Storage

Store vial at 4° C prior to restoration. Restore with 0.1 mL of deionized water (or equivalent). For extended storage aliquot contents and freeze at -20° C or below. Avoid cycles of freezing and thawing. Centrifuge product if not completely clear after standing at room temperature. This product is stable for several weeks at 4° C as an undiluted liquid. Dilute only prior to immediate use. Expiration date is one (1) year from date of restoration.

Note

For research use only

Application notes

Anti-COLLAGEN Type I Antibody Biotin Conjugated has been tested by dot blot and Flow Cytometry and is suitable for western blot, immunoprecipitation, Flow Cytometry, and immunohistochemistry. Researchers should determine optimal titers for applications that are not stated below.

Isotype

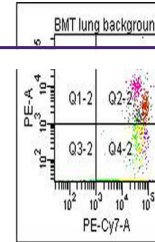
IgG

Clonality

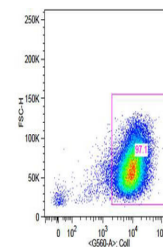
Polyclonal

Purity

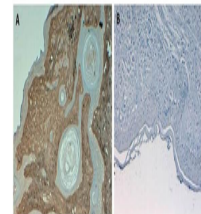
This product has been prepared by immunoaffinity chromatography using immobilized antigens. Some class-specific anti-collagens may be specific for three-dimensional epitopes which may result in diminished reactivity with denatured collagen or formalin-fixed, paraffin embedded tissues. This antibody reacts with most mammalian Type I collagens and has expected cross-reactivity with Type III and negligible cross reactivity with Type II, IV, V or VI collagens. Non-specific cross-reaction of anti-collagen antibodies with other human serum proteins or non-collagen extracellular matrix proteins has not been tested.



Flow Cytometry of Anti-Collagen Type I B...



Flow Cytometry of Rabbit Anti-Collagen 1...



Immunohistochemistry of Rabbit Anti-Coll...