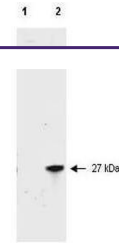


---

## Product Datasheet

### RFP antibody (Peroxidase) (orb345852)

<b>Description</b>	RFP antibody (Peroxidase)
<b>Species/Host</b>	Rabbit
<b>Reactivity</b>	Other
<b>Conjugation</b>	HRP
<b>Tested Applications</b>	ELISA, IHC, WB
<b>Immunogen</b>	The immunogen is a Red Fluorescent Protein (RFP) fusion protein corresponding to the full length amino acid sequence (234aa) derived from the mushroom polyp coral <i>Discosoma</i> .
<b>Preservatives</b>	0.01% (w/v) Gentamicin Sulfate. Do NOT add Sodium Azide!
<b>Form/Appearance</b>	Lyophilized
<b>Concentration</b>	1.0 mg/mL
<b>Storage</b>	Store vial at 4° C prior to restoration. For extended storage aliquot contents and freeze at -20° C or below. Avoid cycles of freezing and thawing. Centrifuge product if not completely clear after standing at room temperature. This product is stable for several weeks at 4° C as an undiluted liquid. Dilute only prior to immediate use.
<b>Note</b>	For research use only
<b>Application notes</b>	Anti-RFP can be used to detect RFP by ELISA (sandwich or capture) for the direct binding of antigen. Biotin conjugated polyclonal anti-RFP has been tested by ELISA and western blot. This product is used in a sandwich ELISA with unconjugated anti-RFP is well suited to titrate RFP in solution. The detection antibody conjugated to biotin is subsequently reacted with streptavidin conjugated HRP (code # S000-03). Fluorochrome conjugated polyclonal anti-RFP can be used to detect RFP by immunofluorescence microscopy in cell expression systems and can detect RFP containing inserts. Significant amplification of signal is achieved using fluorochrome conjugated polyclonal anti-RFP relative to the fluorescence of RFP alone. For immunoblotting use either alkaline phosphatase or peroxidase conjugated polyclonal anti-RFP to detect RFP or RFP containing proteins on western blots. Optimal titers for applications should be determined by the researcher.
<b>Isotype</b>	IgG



Western blot of RFP recombinant protein ...