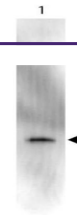


---

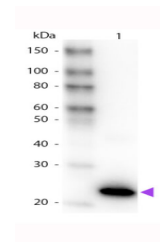
## Product Datasheet

### GFP antibody (Peroxidase) (orb345851)

<b>Description</b>	GFP antibody (Peroxidase)
<b>Species/Host</b>	Rabbit
<b>Reactivity</b>	Other
<b>Conjugation</b>	HRP
<b>Tested Applications</b>	ELISA, IHC, WB
<b>Immunogen</b>	Anti-Green Fluorescent Protein (GFP) is produced by immunizing GFP containing fusion protein that corresponds to the full length amino acid sequence (246aa) derived from the jellyfish <i>Aequorea victoria</i> .
<b>Preservatives</b>	0.01% (w/v) Gentamicin Sulfate. Do NOT add Sodium Azide!
<b>Form/Appearance</b>	Lyophilized
<b>Concentration</b>	1.0 mg/mL
<b>Storage</b>	Store GFP Antibody at 4° C prior to restoration. For extended storage aliquot contents and freeze at -20° C or below. Avoid cycles of freezing and thawing. Centrifuge product if not completely clear after standing at room temperature. This product is stable for several weeks at 4° C as an undiluted liquid. Dilute only prior to immediate use.
<b>Note</b>	For research use only
<b>Application notes</b>	Anti-GFP Antibody is designed to detect GFP and its variants. This GFP Peroxidase conjugated antibody has been tested by ELISA and Western blot. This product can be used to detect GFP by ELISA (sandwich or capture) for the direct binding of antigen and recognizes wild type, recombinant and enhanced forms of GFP. Biotin conjugated polyclonal anti-GFP used in a sandwich ELISA is well suited to titrate GFP in solution using this antibody in combination with Rockland's monoclonal anti-GFP (600-301-215) using either form of the antibody as the capture or detection antibody. However, use the monoclonal form only for the detection of wild type or recombinant GFP as this form does not sufficiently detect 'enhanced' GFP. The detection antibody is typically conjugated to biotin and subsequently reacted with streptavidin conjugated HRP (code # S000-03). Fluorochrome conjugated polyclonal anti-GFP can be used to detect GFP by immunofluorescence microscopy in prokaryotic ( <i>E.coli</i> ) and eukaryotic (CHO cells) expression systems and can detect GFP containing inserts. Significant amplification of signal is achieved using fluorochrome conjugated



Western Blot of Anti-GFP Antibody Peroxi...



Western Blot of Rabbit anti-GFP Peroxida...