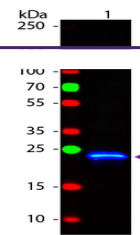

Product Datasheet

GST antibody (FITC) (orb345837)

Description	GST antibody (FITC)
Species/Host	Rabbit
Conjugation	FITC
Tested Applications	ELISA, FC, IF, WB
Immunogen	The immunogen is full length GST isolated from <i>Schistosoma japonicum</i> .
Preservatives	0.01% (w/v) Sodium Azide
Form/Appearance	Lyophilized
Concentration	1.0 mg/mL
Storage	Store FITC conjugated GST Antibody at 4° C prior to restoration. For extended storage aliquot contents and freeze at -20° C or below. Avoid cycles of freezing and thawing. Centrifuge product if not completely clear after standing at room temperature. Antibody is stable for several weeks at 4° C as an undiluted liquid. Dilute only prior to immediate use.
Note	For research use only
Application notes	FITC conjugated GST Antibody has been tested by western blot and is ideal for microscopy and flow cytometry or FACS analysis as well as other antibody based fluorescent assays requiring lot-to-lot consistency.
Isotype	IgG
Clonality	Polyclonal
Purity	FITC conjugated GST Antibody was prepared from monospecific antiserum by immunoaffinity chromatography using GST coupled to agarose beads followed by solid phase adsorption(s) to remove any unwanted reactivities and extensive dialysis against the buffer stated above. Assay by immunoelectrophoresis resulted in a single precipitin arc against anti-fluorescein, anti-Rabbit Serum as well as purified and partially purified Glutathione-S-Transferase [<i>Schistosoma japonicum</i>]. Cross reactivity against Glutathione-S-Transferase from other sources may occur but has not been specifically determined.
Dilution Range	ELISA: 1:60,000, FC: User Optimized, IF: User Optimized, WB: 1:2,000 - 1:10,000
Expiration Date	12 months from date of receipt.



Western Blot of Rabbit anti-GST Fluoresc...