

Product Datasheet

Stim1 antibody (orb345770)

Description

Stim1 antibody

Species/Host

Rabbit

Reactivity

Human, Mouse

Conjugation

Unconjugated

Tested Applications

ELISA, IHC, WB

Immunogen

Stim 1 affinity purified antibody was prepared from whole rabbit serum produced by repeated immunizations with a synthetic peptide near the C-terminus of human Stim 1.

Preservatives

None

Form/Appearance

Liquid (sterile filtered)

Concentration

1.03 mg/mL

Storage

Store vial at -20° C prior to opening. Aliquot contents and freeze at -20° C or below for extended storage. Avoid cycles of freezing and thawing. Centrifuge product if not completely clear after standing at room temperature. This product is stable for several weeks at 4° C as an undiluted liquid. Dilute only prior to immediate use.

Note

For research use only

Application notes

Anti-Stim I antibody is tested for ELISA, immunohistochemistry, and Western Blot. Specific conditions for reactivity should be optimized by the end user. Expect a band approximately ~77kDa corresponding to the appropriate cell lysate or extract.

Isotype

IgG

Clonality

Polyclonal

Purity

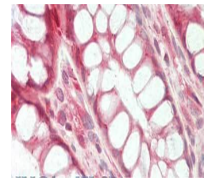
Anti-Stim I was affinity purified from monospecific antiserum by immunoaffinity chromatography. A BLAST analysis was used to suggest cross-reactivity with rat, human, bovine, and mouse based on 100% sequence homology. Cross-reactivity with Stim I from other sources has not been determined.

Uniprot ID
[Q13586](#)
NCBI
[NP_003147.2](#)
Dilution Range

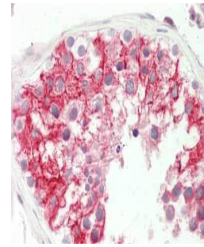
ELISA: 1: 10,000, IHC: 5ug/ml, WB: 1ug/ml

Expiration Date

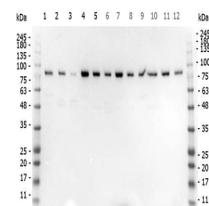
12 months from date of receipt



Immunohistochemistry of Rabbit anti-GOK ...



Immunohistochemistry of Rabbit anti-GOK ...



Western Blot of Rabbit anti-STIM1 antibo...