
Product Datasheet

STAT5 R31-Me1 antibody (orb345724)

Description

STAT5 R31-Me1 antibody

Species/Host

Rabbit

Reactivity

Human

Conjugation

Unconjugated

Tested Applications

DOT, ELISA, WB

Immunogen

STAT5A [Arg31-Methyl] affinity purified antibody was prepared from whole rabbit serum produced by repeated immunizations with a synthetic monomethylated peptide surrounding Arginine 31 of human STAT.

Preservatives

0.05% (w/v) Sodium Azide

Form/Appearance

Liquid (sterile filtered)

Concentration

0.57 mg/ml

Storage

Store vial at -20° C or below prior to opening. This vial contains a relatively low volume of reagent (25 µL). To minimize loss of volume dilute 1:10 by adding 225 µL of the buffer stated above directly to the vial. Recap, mix thoroughly and briefly centrifuge to collect the volume at the bottom of the vial. Use this intermediate dilution when calculating final dilutions as recommended below. Store the vial at -20°C or below after dilution. Avoid cycles of freezing and thawing.

Note

For research use only

Application notes

Anti-STAT5 [Arg31/Me1] antibody has been tested by Dot Blot and is useful for Western Blot. Specific conditions for reactivity should be optimized by the end user. Expect a band approximately ~90.6 kDa corresponding to STAT5 protein by Western Blotting in the appropriate cell lysate or extract.

Isotype

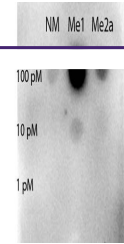
IgG

Clonality

Polyclonal

Purity

Anti-STAT5 R31/Me1 was affinity purified from monospecific antiserum by immunoaffinity chromatography. This antibody is specific for STAT5 R31/Me1 and does not react with other STATs surrounding aa31. A BLAST analysis was used to suggest cross-reactivity with Human, mouse, and rat. Cross-reactivity with STAT5 from other sources has not been determined.

Uniprot ID
[P42229](#)


Dot blot of Rabbit Anti-STAT5 R31-Me1 an...