

---

## Product Datasheet

### HICE1 PS70 antibody (orb345694)

**Description**

HICE1 PS70 antibody

**Species/Host**

Rabbit

**Reactivity**

Human

**Conjugation**

Unconjugated

**Tested**

ELISA, WB

**Applications**
**Immunogen**

Anti-Hice1 pS70 Antibody was prepared by repeated immunizations with a phosphorylated synthetic peptide corresponding to the region of amino acids containing serine 70 of Hice1.

**Preservatives**

0.01% (w/v) Sodium Azide

**Form/Appearance**

Liquid (sterile filtered)

**Concentration**

1.22 mg/mL

**Storage**

Store vial at -20° C prior to opening. Aliquot contents and freeze at -20° C or below for extended storage. Avoid cycles of freezing and thawing. Centrifuge product if not completely clear after standing at room temperature. This product is stable for several weeks at 4° C as an undiluted liquid. Dilute only prior to immediate use.

**Note**

For research use only

**Application notes**

Hice1 pS70 antibody has been tested for use in ELISA and by western blot. Specific conditions for reactivity should be optimized by the end user. Expect a band approximately 44.9 kDa in size corresponding to human phosphorylated Hice1 protein by western blotting in the appropriate stimulated tissue or cell lysate or extract.

**Isotype**

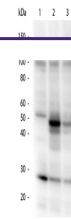
IgG

**Clonality**

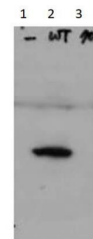
Polyclonal

**Purity**

Hice1 pS70 affinity purified antibody is directed against the phosphorylated form of human Hice1 protein at the S70 residue. The product was affinity purified from monospecific antiserum by immunoaffinity purification. Antiserum was first purified against the phosphorylated form of the immunizing peptide. The resultant affinity purified antibody was then cross adsorbed against the non-phosphorylated form of the immunizing peptide. The antibody is specific for the phosphorylated form of Hice1. Reactivity with non-phosphorylated human Hice1 is minimal by ELISA and western blot. A BLAST analysis was used to suggest cross reactivity with Hice1 from human based on 100% sequence homology with the



Western Blot of Rabbit anti-HICE1 pS70 a...



Western Blot of Rabbit Anti-Hice1 pS70 a...