

---

## Product Datasheet

### BrdU antibody (orb345681)

**Description**

BrdU antibody

**Species/Host**

Rabbit

**Reactivity**

Other

**Conjugation**

Unconjugated

**Tested**

ELISA, FC, IF, IHC, IP, WB

**Applications**
**Immunogen**

Anti-BrdU affinity purified antibody was purified from monospecific rabbit antiserum prepared via repeated immunizations with BromodeoxyUridine-KLH.

**Preservatives**

0.01% (w/v) Sodium Azide

**Form/Appearance**

Liquid (sterile filtered)

**Concentration**

1.1 mg/mL

**Storage**

Store BrdU Antibody at -20° C or below prior to opening. This vial contains a relatively low volume of reagent (25 µL). To minimize loss of volume dilute 1:10 by adding 225 µL of the buffer stated above directly to the vial. Recap, mix thoroughly and briefly centrifuge to collect the volume at the bottom of the vial. Use this intermediate dilution when calculating final dilutions as recommended below. Store the vial at -20°C or below after dilution. Avoid cycles of freezing and thawing.

**Note**

For research use only

**Application notes**

Anti-BrdU Antibody has been tested by ELISA, WB, IHC, and is suitable for immunofluorescence microscopy and flow cytometry. Specific conditions for reactivity should be optimized by the end user. Expect to detect incorporated BrdU thymidine analog from replicated cells.

**Isotype**

IgG

**Clonality**

Polyclonal

**Purity**

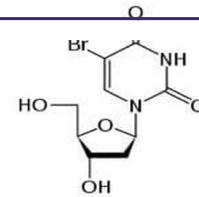
BrdU Antibody was affinity purified from monospecific antiserum by immunoaffinity chromatography.

**Dilution Range**

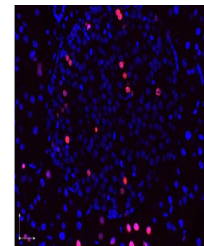
ELISA: 1:2000 - 1:10,000, FC: 1:50-1:100, IHC: 1:100-1:500, IF: 1:500, IP: User Optimized, WB: User Optimized

**Expiration Date**

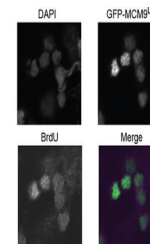
12 months from date of receipt.



Bromodeoxyuridine (BrdU) chemical struct...



Immunofluorescence microscopy images of ...



Immunofluorescence Microscopy of Rabbit ...