

---

## Product Datasheet

### BrdU antibody (orb345680)

**Description**

BrdU antibody

**Species/Host**

Rabbit

**Reactivity**

Other

**Conjugation**

Unconjugated

**Tested**

ELISA, FC, IF, IHC, IP, WB

**Applications**
**Immunogen**

Anti-BrdU affinity purified antibody was purified from monospecific rabbit antiserum prepared via repeated immunizations with BromodeoxyUridine-KLH.

**Preservatives**

0.01% (w/v) Sodium Azide

**Form/Appearance**

Liquid (sterile filtered)

**Concentration**

1.1 mg/mL

**Storage**

Store BrdU Antibody at -20° C prior to opening. Aliquot contents and freeze at -20° C or below for extended storage. Avoid cycles of freezing and thawing. Centrifuge product if not completely clear after standing at room temperature. This product is stable for several weeks at 4° C as an undiluted liquid. Dilute only prior to immediate use.

**Note**

For research use only

**Application notes**

Anti-BrdU Antibody has been tested by ELISA, WB, IHC, and is suitable for immunofluorescence microscopy and flow cytometry. Specific conditions for reactivity should be optimized by the end user. Expect to detect incorporated BrdU thymidine analog from replicated cells.

**Isotype**

IgG

**Clonality**

Polyclonal

**Purity**

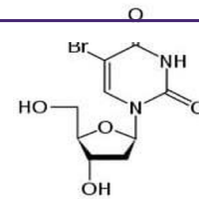
Anti-BrdU Antibody was affinity purified from monospecific antiserum by immunoaffinity chromatography.

**Dilution Range**

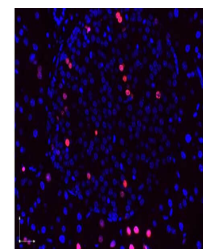
ELISA: 1:2000 - 1:10,000, FC: 1:50-1:100, IHC: 1:100-1:500, IF: 1:500, IP: User Optimized, WB: User Optimized

**Expiration Date**

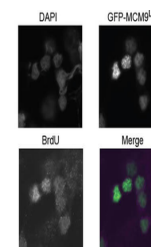
12 months from date of receipt.



Bromodeoxyuridine (BrdU) chemical struct...



Immunofluorescence microscopy images of ...



Immunofluorescence Microscopy of Rabbit ...