

## Product Datasheet

### RRM2B p53R2 antibody (orb345677)

**Description**

RRM2B p53R2 antibody

**Species/Host**

Rabbit

**Reactivity**

Human

**Conjugation**

Unconjugated

**Tested**

ELISA, IF, IHC, IP, WB

**Applications**
**Immunogen**

Anti-Human RRM2B/p53R2 antibody was prepared by repeated immunizations with a synthetic peptide corresponding to a region near the N-terminus of human RRM2B1 protein. A residue of cysteine was added to facilitate coupling.

**Preservatives**

0.01% (w/v) Sodium Azide

**Form/Appearance**

Liquid (sterile filtered)

**Concentration**

0.82 mg/mL

**Storage**

Store vial at -20° C prior to opening. Aliquot contents and freeze at -20° C or below for extended storage. Avoid cycles of freezing and thawing. Centrifuge product if not completely clear after standing at room temperature. This product is stable for several weeks at 4° C as an undiluted liquid. Dilute only prior to immediate use.

**Note**

For research use only

**Application notes**

RRM2B/p53R2 antibody is tested in Western Blot and ELISA and suitable for IP, IHC, and IF. Specific conditions for reactivity should be optimized by the end user. Expect a band approximately 41 kDa in size corresponding to RRM2B1 by western blotting in the appropriate cell lysate or extract.

**Isotype**

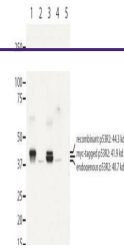
IgG

**Clonality**

Polyclonal

**Purity**

Anti-Human RRM2B/p53R2 is directed against RRM2B and reacts with the RRM2B from human tissues. Based on sequence we expect this antibody to react as well with RRM2B from other species. Based on 100% homology to the immunizing sequence, one may expect reactivity to chimpanzee and orangutan; based on 93% homology, reactivity to macaque, and 92% to pig and Drosophila.

**Uniprot ID**
[Q7LG56](#)
**NCBI**
[42544136](#)


Western blot using Biorbyt's affinity pu...