
Product Datasheet

PRDM1 BLIMP1 antibody (orb345674)

Description

PRDM1 BLIMP1 antibody

Species/Host

Rabbit

Reactivity

Human

Conjugation

Unconjugated

Tested

ELISA, IHC, WB

Applications
Immunogen

This affinity purified antibody was prepared from whole rabbit serum produced by repeated immunizations with a synthetic peptide corresponding to a region near the C-terminus of human, mouse, and rat PRDM1/BLIMP1.

Preservatives

0.01% (w/v) Sodium Azide

Form/Appearance

Liquid (sterile filtered)

Concentration

1.15 mg/mL

Storage

Store vial at -20° C or below prior to opening. This vial contains a relatively low volume of reagent (25 µL). To minimize loss of volume dilute 1:10 by adding 225 µL of the buffer stated above directly to the vial. Recap, mix thoroughly and briefly centrifuge to collect the volume at the bottom of the vial. Use this intermediate dilution when calculating final dilutions as recommended below. Store the vial at -20°C or below after dilution. Avoid cycles of freezing and thawing.

Note

For research use only

Application notes

This affinity purified antibody has been tested for use in ELISA, Immunohistochemistry, and western blotting. Specific conditions for reactivity should be optimized by the end user. Expect a band at ~88 kDa in size corresponding to BLIMP1 by western blotting in the appropriate cell lysate or extract.

Isotype

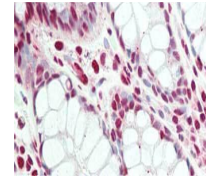
IgG

Clonality

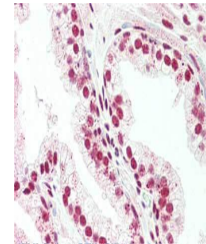
Polyclonal

Purity

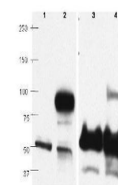
This affinity purified antibody is directed against human BLIMP1 protein. The product was affinity purified from monospecific antiserum by immunoaffinity chromatography. This antibody is predicted to react with BLIMP1 and its isoforms from human, mouse, rat and other sources based on a 100% homology with the immunizing sequence. This antibody may also recognize other



Immunohistochemistry of rabbit anti-PRDM...



Immunohistochemistry of rabbit anti-PRDM...



Western blots using Biorbyt's affinity p...