

## Product Datasheet

### PRDM1 BLIMP1 antibody (orb345673)

**Description**

PRDM1 BLIMP1 antibody

**Species/Host**

Rabbit

**Reactivity**

Human

**Conjugation**

Unconjugated

**Tested**

ELISA, IHC, IP, WB

**Applications**
**Immunogen**

Anti-Blimp1 antibody was prepared from whole rabbit serum produced by repeated immunizations with a synthetic peptide corresponding to a region near the C-terminus of human, mouse, and rat PRDM1/BLIMP1.

**Preservatives**

0.01% (w/v) Sodium Azide

**Form/Appearance**

Liquid (sterile filtered)

**Concentration**

1.0 mg/mL

**Storage**

Store Blimp1 antibody at -20° C prior to opening. Aliquot contents and freeze at -20° C or below for extended storage. Avoid cycles of freezing and thawing. Centrifuge product if not completely clear after standing at room temperature. This product is stable for several weeks at 4° C as an undiluted liquid. Dilute only prior to immediate use.

**Note**

For research use only

**Application notes**

This affinity purified antibody has been tested for use in ELISA, Immunohistochemistry, and western blotting. Specific conditions for reactivity should be optimized by the end user. Expect a band at ~88 kDa in size corresponding to BLIMP1 by western blotting in the appropriate cell lysate or extract.

**Isotype**

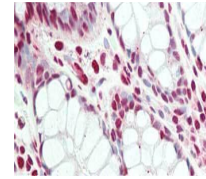
IgG

**Clonality**

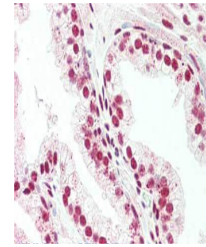
Polyclonal

**Purity**

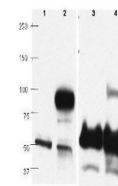
This affinity purified antibody is directed against human BLIMP1 protein. The product was affinity purified from monospecific antiserum by immunoaffinity chromatography. This antibody is predicted to react with BLIMP1 and its isoforms from human, mouse, rat and other sources based on a 100% homology with the immunizing sequence. This antibody may also recognize other proteins that show high homology/identity with the BLIMP1 sequence.



Immunohistochemistry of rabbit anti-PRDM...



Immunohistochemistry of rabbit anti-PRDM...



Western blots using Biorbyt's affinity p...