

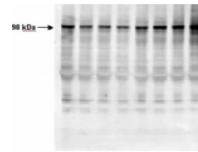
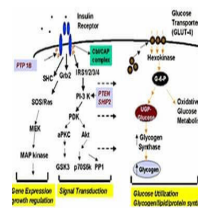
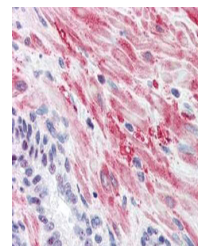
---

## Product Datasheet

### Muscle Glycogen Synthase (phospho-S641) antibody (orb345666)

**Description**

Muscle Glycogen Synthase (phospho-S641)

 1 2 3 4 5 6 7 8  
 EW0221112MB-12EW0221112M22

 Affinity Purified  
 Phospho-specific  
 pS641...

 Diagram of glycogen  
 synthase as a  
 compon...

 Immunohistochemistry  
 with Anti-Glycogen ...

<b>Species/Host</b>	Rabbit
<b>Reactivity</b>	Human, Mouse
<b>Conjugation</b>	Unconjugated
<b>Tested Applications</b>	ELISA, IHC, WB
<b>Immunogen</b>	Human Muscle Glycogen Synthase phospho peptide corresponding to a region of the human protein conjugated to Keyhole Limpet Hemocyanin (KLH).
<b>Preservatives</b>	None
<b>Form/Appearance</b>	Liquid (sterile filtered)
<b>Concentration</b>	1.0mg/mL
<b>Storage</b>	Store Phospho GSY1 antibody at -20° C or below prior to opening. This vial contains a relatively low volume of reagent (25 µL). To minimize loss of volume dilute 1:10 by adding 225 µL of the buffer stated above directly to the vial. Recap, mix thoroughly and briefly centrifuge to collect the volume at the bottom of the vial. Use this intermediate dilution when calculating final dilutions as recommended below. Store the vial at -20°C or below after dilution. Avoid cycles of freezing and thawing.
<b>Note</b>	For research use only
<b>Application notes</b>	This phospho specific polyclonal antibody was tested by immunohistochemistry, immunoblotting, and ELISA. By ELISA the antibody was found to be reactive with the phosphorylated form of the immunizing peptide and minimally reactive with the non-phosphorylated form of the immunizing peptide. Immunoblotting will detect human and mouse muscle glycogen synthase. Although not tested, this antibody is likely functional in immunoprecipitation.
<b>Isotype</b>	IgG
<b>Clonality</b>	Polyclonal
<b>Purity</b>	Phospho Glycogen Synthase pS641 antibody is directed against human muscle glycogen