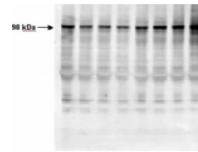
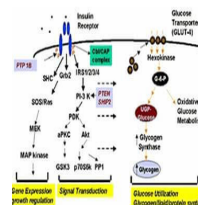
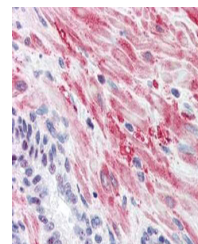

Product Datasheet

Muscle Glycogen Synthase (phospho-S641) antibody (orb345665)

Description

Muscle Glycogen Synthase (phospho-S641)

 1 2 3 4 5 6 7 8
 EW022111 12MB-12EW022111 12M22

 Affinity Purified
 Phospho-specific
 pS641...

 Diagram of glycogen
 synthase as a
 compon...

 Immunohistochemistry
 with Anti-Glycogen ...

Species/Host

Rabbit

Reactivity

Human, Mouse

Conjugation

Unconjugated

Tested Applications

ELISA, IHC, WB

Immunogen

Human Muscle Glycogen Synthase phospho peptide corresponding to pS641 region of the human protein conjugated to Keyhole Limpet Hemocyanin (KLH).

Preservatives

None

Form/Appearance

Liquid (sterile filtered)

Concentration

0.95 mg/mL

Storage

Store Phospho GYS1 antibody at -20° C prior to opening. Aliquot contents and freeze at -20° C or below for extended storage. Avoid cycles of freezing and thawing. Centrifuge product if not completely clear after standing at room temperature. This product is stable for several weeks at 4° C as an undiluted liquid. Dilute only prior to immediate use.

Note

For research use only

Application notes

This phospho specific polyclonal antibody was tested by immunohistochemistry, immunoblotting, and ELISA. By ELISA the antibody was found to be reactive with the phosphorylated form of the immunizing peptide and minimally reactive with the non-phosphorylated form of the immunizing peptide. Immunoblotting will detect human and mouse muscle glycogen synthase. Although not tested, this antibody is likely functional in immunoprecipitation.

Isotype

IgG

Clonality

Polyclonal

Purity

Phospho Glycogen Synthase pS641 antibody is directed against human muscle glycogen synthase. The product was affinity purified from monospecific antiserum by immunoaffinity purification. Antiserum was first purified against the phosphorylated