
Product Datasheet

SAE1 (phospho-S185) antibody (orb345661)

Description

SAE1 (phospho-S185) antibody

Species/Host

Rabbit

Reactivity

Human

Conjugation

Unconjugated

Tested

ELISA, WB

Applications
Immunogen

This purified antibody was prepared from whole rabbit serum produced by repeated immunizations with a synthetic peptide corresponding to a region surrounding S185 of the human SUMO Activating Enzyme E1 protein.

Preservatives

0.01% (w/v) Sodium Azide

Form/Appearance

Liquid (sterile filtered)

Concentration

1.02 mg/ml

Storage

Store vial at -20° C prior to opening. Aliquot contents and freeze at -20° C or below for extended storage. Avoid cycles of freezing and thawing. Centrifuge product if not completely clear after standing at room temperature. This product is stable for several weeks at 4° C as an undiluted liquid. Dilute only prior to immediate use.

Note

For research use only

Application notes

This purified antibody has been tested for use in ELISA and western blot. Specific conditions for reactivity should be optimized by the end user. Expect a band at ~37 kDa in size corresponding to phosphorylated SAE1 protein by western blotting in the appropriate cell lysate or extract. This phospho-specific antibody reacts with human SAE1 pS185 and shows minimal reactivity by ELISA against the non-phosphorylated form of the immunizing peptide.

Isotype

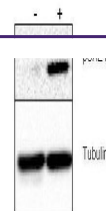
IgG

Clonality

Polyclonal

Purity

This purified antibody is directed against human SUMO Activating Enzyme E1 protein. The product was purified from monospecific antiserum by affinity chromatography. This antibody is specific for human SAE1 protein phosphorylated at S185. A BLAST analysis using the sequence of the immunizing peptide was used to suggest that this antibody would react with SUMO Activating Enzyme E1 protein from human (100%), bovine, dog, chimpanzee (96%)



Western blot using Biorbyt's Rabbit anti...