
Product Datasheet

STAT2 (phospho-Y690) antibody (orb345630)

Description

STAT2 (phospho-Y690) antibody

Species/Host

Rabbit

Reactivity

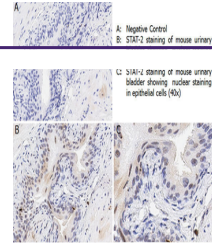
Human, Mouse

Conjugation

Unconjugated

Tested

ELISA, IHC, WB

Applications


Immunohistochemistry with anti-STAT2 pY6...

Immunogen

This affinity purified antibody was prepared from whole rabbit serum produced by repeated immunizations with a synthetic peptide corresponding to a C-terminus region near phospho Tyrosine 690 of human STAT2 protein.

Preservatives

0.01% (w/v) Sodium Azide

Form/Appearance

Liquid (sterile filtered)

Concentration

1.15 mg/mL

Storage

Store vial at -20° C or below prior to opening. This vial contains a relatively low volume of reagent (25 µL). To minimize loss of volume dilute 1:10 by adding 225 µL of the buffer stated above directly to the vial. Recap, mix thoroughly and briefly centrifuge to collect the volume at the bottom of the vial. Use this intermediate dilution when calculating final dilutions as recommended below. Store the vial at -20°C or below after dilution. Avoid cycles of freezing and thawing.



Western blot using Biorbyt affinity puri...

Note

For research use only

Application notes

This affinity purified antibody has been tested for use in ELISA, western blotting, and IHC. Specific conditions for reactivity should be optimized by the end user. Expect a band approximately 113 kDa in size corresponding to STAT2 pY690 protein by western blotting in the appropriate cell lysate or extract.

Isotype

IgG

Clonality

Polyclonal

Purity

This affinity purified antibody is directed against human STAT2 pY690 protein. The product was affinity purified from monospecific antiserum by immunoaffinity chromatography. A BLAST analysis was used to suggest cross-reactivity with STAT2 pY690 protein from human, rat (73%) and mouse (76%) sources.