
Product Datasheet

MLF1 antibody (orb345627)

Description

MLF1 antibody

Species/Host

Rabbit

Reactivity

Human

Conjugation

Unconjugated

Tested

ELISA, IHC, WB

Applications
Immunogen

This affinity purified antibody was prepared from whole rabbit serum produced by repeated immunizations with a 200 residue recombinant protein corresponding to the amino terminal end of human MLF1IP protein.

Preservatives

0.01% (w/v) Sodium Azide

Form/Appearance

Liquid (sterile filtered)

Concentration

0.88 mg/mL

Storage

Store vial at -20° C prior to opening. Aliquot contents and freeze at -20° C or below for extended storage. Avoid cycles of freezing and thawing. Centrifuge product if not completely clear after standing at room temperature. This product is stable for several weeks at 4° C as an undiluted liquid. Dilute only prior to immediate use.

Note

For research use only

Application notes

This affinity purified antibody has been tested for use in ELISA, Immunohistochemistry, and western blotting. Specific conditions for reactivity should be optimized by the end user. Expect a band approximately 65 kDa in size corresponding to MLF1IP protein by western blotting in the appropriate cell lysate or extract.

Isotype

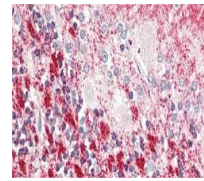
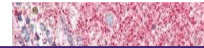
IgG

Clonality

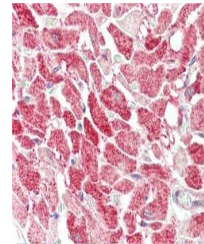
Polyclonal

Purity

This affinity purified antibody is directed against human MLF1IP protein. The product was affinity purified from monospecific antiserum by immunoaffinity chromatography. A BLAST analysis was used to suggest cross-reactivity with MLF1IP protein from human, chimpanzee (98%), horse (72%), bovine (69%), dog (65%), mouse (56%), rat (55%) and chicken (47%) sources based on homology with the immunizing sequence. Reactivity against homologues from other sources is not known.



Immunohistochemistry of rabbit anti-MLF1...



Immunohistochemistry of rabbit anti-MLF1...



Western blot using Biorbyt's affinity pu...