

## Product Datasheet

### PBIP1 antibody (orb345625)

**Description**

PBIP1 antibody

**Species/Host**

Rabbit

**Reactivity**

Human

**Conjugation**

Unconjugated

**Tested**

ELISA, IHC, WB

**Applications**
**Immunogen**

This affinity purified antibody was prepared from whole rabbit serum produced by repeated immunizations with a 418 residue recombinant protein corresponding to the carboxy terminal end of human MLF1IP protein.

**Preservatives**

0.01% (w/v) Sodium Azide

**Form/Appearance**

Liquid (sterile filtered)

**Concentration**

1.1 mg/mL

**Storage**

Store vial at -20° C prior to opening. Aliquot contents and freeze at -20° C or below for extended storage. Avoid cycles of freezing and thawing. Centrifuge product if not completely clear after standing at room temperature. This product is stable for several weeks at 4° C as an undiluted liquid. Dilute only prior to immediate use.

**Note**

For research use only

**Application notes**

This affinity purified antibody has been tested for use in ELISA, Immunohistochemistry, and western blotting. Specific conditions for reactivity should be optimized by the end user. Expect a band approximately 65 kDa in size corresponding to MLF1IP protein by western blotting in the appropriate cell lysate or extract.

**Isotype**

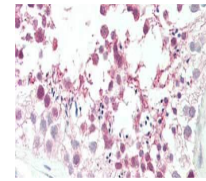
IgG

**Clonality**

Polyclonal

**Purity**

This affinity purified antibody is directed against human MLF1IP protein. The product was affinity purified from monospecific antiserum by immunoaffinity chromatography. A BLAST analysis was used to suggest cross-reactivity with MLF1IP protein from human, chimpanzee (98%), horse (72%), bovine (69%), dog (65%), mouse (56%), rat (55%) and chicken (47%) sources based on homology with the immunizing sequence. Reactivity against homologues from other sources is not known.



Immunohistochemistry of rabbit anti-MLF1...



Western blot using Biorbyt's affinity pu...