

---

## Product Datasheet

### ABCB5 antibody (orb345619)

**Description**

ABCB5 antibody

**Species/Host**

Rabbit

**Reactivity**

Human

**Conjugation**

Unconjugated

**Tested**

ELISA, IHC, WB

**Applications**
**Immunogen**

ABCB5 antibody was prepared from whole rabbit serum produced by repeated immunizations with a synthetic peptide corresponding to residues corresponding to an internal region of human ABCB5.

**Preservatives**

0.01% (w/v) Sodium Azide

**Form/Appearance**

Liquid (sterile filtered)

**Concentration**

1.1 mg/mL

**Storage**

Store Anti-ABCB5 at -20° C prior to opening. Aliquot antibody and freeze at -20° C or below for extended storage. Avoid cycles of freezing and thawing. Centrifuge product if not completely clear after standing at room temperature. This product is stable for several weeks at 4° C as an undiluted liquid. Dilute only prior to immediate use.

**Note**

For research use only

**Application notes**

This affinity purified ABCB5 antibody has been tested for use in ELISA, IHC, and western blotting. Specific conditions for reactivity should be optimized by the end user.

**Isotype**

IgG

**Clonality**

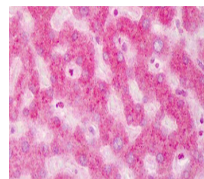
Polyclonal

**Purity**

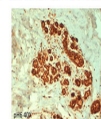
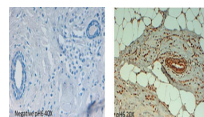
This product was affinity purified from monospecific antiserum by immunoaffinity chromatography. This antibody is specific for human ABCB5 protein. A BLAST analysis was used to suggest partial cross-reactivity with ABCB5 from monkey (85% homology), rat (68% homology) and mouse (62% homology) sources. Cross-reactivity with ABCB5 from other sources has not been determined.

**Uniprot ID**
[Q2M3G0](#)
**NCBI**
[56849536](#)
**Dilution Range**

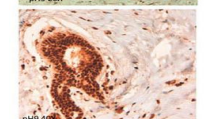
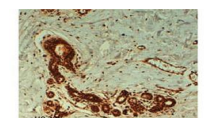
ELISA: 1:10,000 - 1:50,000, IHC: 1:200, WB:



Immunohistochemistry of ABCB5 antibody. ...



Immunohistochemistry of Rabbit anti ABCB...



Immunohistochemistry of Rabbit anti ABCB...