

---

## Product Datasheet

### **IL-7 Receptor Alpha Chain (phospho-Y449) antibody (orb345608)**

**Description**

IL-7 Receptor Alpha Chain (phospho-Y449)


**Species/Host**

Rabbit

**Reactivity**

Human, Mouse, Rat

**Conjugation**

Unconjugated

**Tested Applications**

ELISA, IHC, WB

**Immunogen**

This affinity purified antibody was prepared from whole rabbit serum produced by repeated immunizations with a synthetic peptide corresponding to residues near Y449 of mouse IL-7 protein.

**Preservatives**

0.01% (w/v) Sodium Azide

**Form/Appearance**

Liquid (sterile filtered)

**Concentration**

0.72 mg/mL

**Storage**

Store IL-7 Receptor Alpha Chain phospho Y449 Antibody at -20° C prior to opening. Aliquot contents and freeze at -20° C or below for extended storage. Avoid cycles of freezing and thawing. Centrifuge product if not completely clear after standing at room temperature. This product is stable for several weeks at 4° C as an undiluted liquid. Dilute only prior to immediate use.

**Note**

For research use only

**Application notes**

This affinity purified antibody has been tested for use in ELISA, immunoprecipitation, and western blotting. Specific conditions for reactivity should be optimized by the end user. Expect a band approximately 55 kDa in size corresponding to phosphorylated IL-7 by western blotting in the appropriate cell lysate or extract. This phospho-specific polyclonal antibody reacts with mouse IL-7 pY449 and shows minimal reactivity by ELISA against the non-phosphorylated form of the immunizing peptide.

**Isotype**

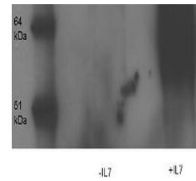
IgG

**Clonality**

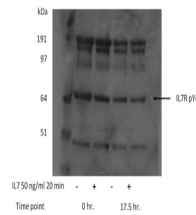
Polyclonal

**Purity**

This product was affinity purified from monospecific antiserum by immunoaffinity chromatography using phospho-peptide



Western Blot and immunoprecipitation of ...



Western Blot of Rabbit anti- IL-7- Recept...