

Product Datasheet

AHA1 antibody (orb345571)

Description

AHA1 antibody

Species/Host

Rabbit

Reactivity

Human, Monkey

Conjugation

Unconjugated

Tested Applications

ELISA, IHC, WB

Immunogen

This affinity purified antibody was prepared from whole rabbit serum produced by repeated immunizations with a synthetic peptide corresponding to an internal region of human AHA1 protein.

Preservatives

0.01% (w/v) Sodium Azide

Form/Appearance

Liquid (sterile filtered)

Concentration

1.0 mg/mL

Storage

Store vial at -20° C prior to opening. Aliquot contents and freeze at -20° C or below for extended storage. Avoid cycles of freezing and thawing. Centrifuge product if not completely clear after standing at room temperature. This product is stable for several weeks at 4° C as an undiluted liquid. Dilute only prior to immediate use.

Note

For research use only

Application notes

This affinity purified antibody has been tested for use in ELISA and western blotting. Specific conditions for reactivity should be optimized by the end user. Expect a band approximately 38-40 kDa in size corresponding to AHA1 protein by western blotting in the appropriate cell lysate or extract.

Isotype

IgG

Clonality

Polyclonal

Purity

This affinity purified antibody is directed against human AHA1 protein. The product was affinity purified from monospecific antiserum by immunoaffinity chromatography. A BLAST analysis was used to suggest cross-reactivity with AHA1 protein from human and chimpanzee based on 100% homology with the immunizing sequence. Reactivity against homologues from other sources is not known.

Uniprot ID

[O95433](#)

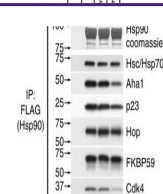
NCBI

[NP_001308370.1](#)

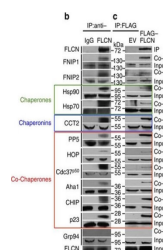
Dilution Range

ELISA: 1:35,000 - 1:185,000, IHC: User Optimized, WB: 1

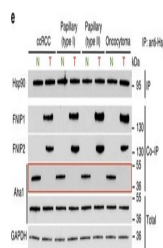
c



Assembly of complexes of Cdc37 and Hsp90...



Folliculin is a new client of Hsp90. (a)...



High levels of FNIPs make renal tumours ...