

Product Datasheet

MECT1 antibody (orb345552)

Description

MECT1 antibody

Species/Host

Rabbit

Reactivity

Bovine, Fish, Human, Mouse, Rat, Zebrafish

Conjugation

Unconjugated

Tested Applications

ELISA, WB

Immunogen

This affinity purified antibody was prepared from whole rabbit serum produced by repeated immunizations with a synthetic peptide corresponding to amino acids 19-34 of human MECT1 protein.

Preservatives

0.01% (w/v) Sodium Azide

Form/Appearance

Liquid (sterile filtered)

Concentration

1.0 mg/mL

Storage

Store vial at -20° C prior to opening. Aliquot contents and freeze at -20° C or below for extended storage. Avoid cycles of freezing and thawing. Centrifuge product if not completely clear after standing at room temperature. This product is stable for several weeks at 4° C as an undiluted liquid. Dilute only prior to immediate use.

Note

For research use only

Application notes

This affinity-purified antibody has been tested for use in ELISA and western blot. Specific conditions for reactivity should be optimized by the end user. Expect a band approximately 80-95 kDa in size corresponding to MECT1 protein by western blotting in the appropriate cell lysate or extract. This antibody is will react with isoform 1 and 2 of MECT1.

Isotype

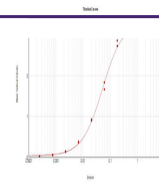
IgG

Clonality

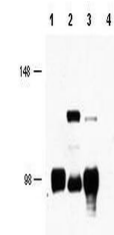
Polyclonal

Purity

This affinity-purified antibody is directed against human MECT1 protein. The product was affinity purified from monospecific antiserum by immunoaffinity purification. A BLAST analysis was used to suggest cross reactivity with MECT1 protein from human, mouse, rat, zebrafish, pufferfish and bovine based on 100% homology with the immunizing sequence. Reactivity against homologues from other sources is not known.

Uniprot ID
[Q6UUV9](#)
NCBI
[148596965](#)


ELISA Results of Rabbit Anti-MECT1 Antib...



Western blot using Biorbyt's affinity pu...