

---

## Product Datasheet

### Mlf1 (phospho-T78) antibody (orb345549)

**Description**

Mlf1 (phospho-T78) antibody

**Species/Host**

Rabbit

**Reactivity**

Human

**Conjugation**

Unconjugated

**Tested**

ELISA, IF, IHC, WB

**Applications**
**Immunogen**

This affinity purified antibody was prepared from whole rabbit serum produced by repeated immunizations with a synthetic peptide corresponding to amino acids surrounding Thr78 of human MLF1IP protein. The immunogen peptide is phosphorylated at Thr78.

**Preservatives**

0.01% (w/v) Sodium Azide

**Form/Appearance**

Liquid (sterile filtered)

**Concentration**

1.0 mg/mL

**Storage**

Store vial at -20° C prior to opening. Aliquot contents and freeze at -20° C or below for extended storage. Avoid cycles of freezing and thawing. Centrifuge product if not completely clear after standing at room temperature. This product is stable for several weeks at 4° C as an undiluted liquid. Dilute only prior to immediate use.

**Note**

For research use only

**Application notes**

This affinity purified antibody has been tested for use in ELISA, western blotting, IF, and IHC. Specific conditions for reactivity should be optimized by the end user. Expect a band approximately 65 kDa in size corresponding to MLF1IP protein by western blotting in the appropriately stimulated tissue, cell lysate or extract.

**Isotype**

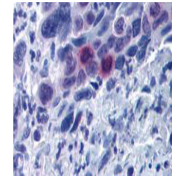
IgG

**Clonality**

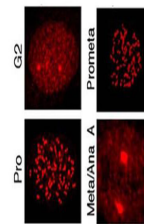
Polyclonal

**Purity**

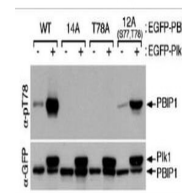
This product was affinity purified from monospecific antiserum by immunoaffinity chromatography using phospho-peptide coupled to agarose beads followed by solid phase adsorption against the non-phospho peptide. This antibody is specific for human MLF1IP protein phosphorylated at Thr78. A BLAST analysis was used to suggest cross-reactivity with MLF1IP protein from human, dog, bovine and chimpanzee based on 100% homology with the immunizing sequence. Expect partial reactivity with homologues



Biorbyt's affinity purified anti-MLF1IP ...



Immunostaining using Biorbyt's affinity ...



Western blot using Biorbyt's affinity pu...