
Product Datasheet

EGFR (phospho-Y1197) antibody (orb345547)

Description

EGFR (phospho-Y1197) antibody


Species/Host

Rabbit

Reactivity

Human

Conjugation

Unconjugated

Tested

ELISA, IHC, WB

Applications

 Immunohistochemistry
of Rabbit anti-EGFR...

Immunogen

This affinity purified antibody was prepared from whole rabbit serum produced by repeated immunizations with a synthetic peptide corresponding to the C-Terminus near amino acids 1175-1200 of human EGFR protein.

Preservatives

0.01% (w/v) Sodium Azide

Form/Appearance

Liquid (sterile filtered)

Concentration

0.55 mg/mL

Storage

Store vial at -20° C prior to opening. Aliquot contents and freeze at -20° C or below for extended storage. Avoid cycles of freezing and thawing. Centrifuge product if not completely clear after standing at room temperature. This product is stable for several weeks at 4° C as an undiluted liquid. Dilute only prior to immediate use.

Note

For research use only

Application notes

This affinity purified antibody has been tested for use in ELISA, immunohistochemistry and western blot. Specific conditions for reactivity should be optimized by the end user. Expect a band approximately 170 kDa in size corresponding to phosphorylated EGFR protein by western blotting in the appropriate cell lysate or extract. Less than 5.0% reactivity is observed against the non-phosphorylated form of the immunizing peptide. This antibody is phospho specific for pY1197 of EGFR protein.

Isotype

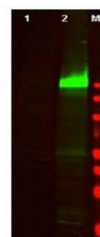
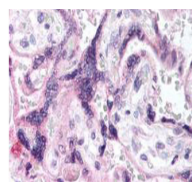
IgG

Clonality

Polyclonal

Purity

This affinity-purified antibody is directed against the phosphorylated form of human EGFR protein at the pY1197 residue. The product was affinity purified from monospecific antiserum by immunoaffinity purification. Antiserum was first purified against the phosphorylated form of the


 Western Blot of Rabbit
anti-EGFR pY1197 ...