
Product Datasheet

ASAP1 (phospho-Y782) antibody (orb345529)

Description

ASAP1 (phospho-Y782) antibody

Species/Host

Rabbit

Reactivity

Human, Mouse

Conjugation

Unconjugated

Tested

ELISA, IF, IHC, WB

Applications
Immunogen

This affinity purified antibody was prepared from whole rabbit serum produced by repeated immunizations with a synthetic peptide corresponding to an internal region near amino acids 775-800 of mouse ASAP1 protein.

Preservatives

0.01% (w/v) Sodium Azide

Form/Appearance

Liquid (sterile filtered)

Concentration

1.00 mg/mL

Storage

Store vial at -20° C prior to opening. Aliquot contents and freeze at -20° C or below for extended storage. Avoid cycles of freezing and thawing. Centrifuge product if not completely clear after standing at room temperature. This product is stable for several weeks at 4° C as an undiluted liquid. Dilute only prior to immediate use.

Note

For research use only

Application notes

This affinity purified antibody has been tested for use in ELISA, immunohistochemistry, IF microscopy and by western blot. Specific conditions for reactivity should be optimized by the end user. Expect a band approximately 130 kDa in size corresponding to phosphorylated ASAP1 protein by western blotting in the appropriate cell lysate or extract. Less than 2.5% reactivity is observed against the non-phosphorylated form of the immunizing peptide. This antibody is phospho specific for pY782 of ASAP1 protein.

Isotype

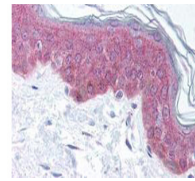
IgG

Clonality

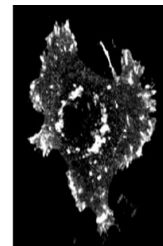
Polyclonal

Purity

This affinity-purified antibody is directed against the phosphorylated form of mouse ASAP1 protein at the pY782 residue. The product was affinity purified from monospecific antiserum by immunoaffinity purification. Antiserum was first purified against the phosphorylated form of the immunizing peptide. The resultant affinity purified



Biorbyt's affinity purified anti-ASAP1 p...



Immunofluorescent microscopy using Biorb...