
Product Datasheet

DELTA-1 antibody (orb345496)

Description

DELTA-1 antibody

Anti-Mouse DELTA-1-Specificity

Species/Host

Rabbit

Reactivity

Mouse

Conjugation

Unconjugated

Tested

ELISA, IHC, WB

Applications
Immunogen

This affinity purified antibody was prepared from whole rabbit serum produced by repeated immunizations with a synthetic peptide corresponding to an internal region near amino acids 150-175 of Mouse DELTA-1. Swiss Prot accession Q61483.

Preservatives

0.01% (w/v) Sodium Azide

Form/Appearance

Liquid (sterile filtered)

Concentration

1.21 mg/mL

Storage

Store vial at -20° C prior to opening. Aliquot contents and freeze at -20° C or below for extended storage. Avoid cycles of freezing and thawing. Centrifuge product if not completely clear after standing at room temperature. This product is stable for several weeks at 4° C as an undiluted liquid. Dilute only prior to immediate use.

Note

For research use only

Application notes

Anti-DELTA-1 Antibody has been tested for use in ELISA against the immunizing peptide, western blot, and in IHC. Reactivity in other immunoassays is unknown.

Isotype

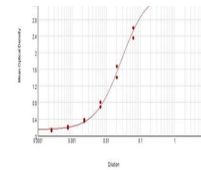
IgG

Clonality

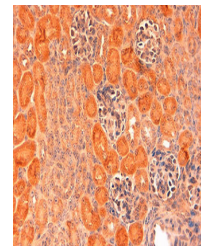
Polyclonal

Purity

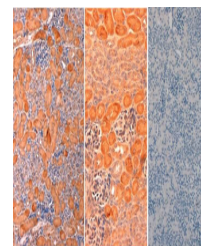
Anti-DELTA-1 Antibody was affinity purified antibody produced by immunoaffinity chromatography using the immunizing peptide after immobilization to a solid phase. The antibody detects DELTA-1 from mouse. Activity against Delta-1 from other species has not been determined but is expected based on sequence homology. Expected to cross-react with rat, human and chicken.

Uniprot ID
[Q61483](https://www.uniprot.org/entry/Q61483)
NCBI
[NP_031891.2](https://www.ncbi.nlm.nih.gov/nuccore/NP_031891.2)


ELISA results of purified Rabbit anti-Mo...



Immunohistochemistry of Rabbit Anti-Delt...



Immunohistochemistry of Rabbit anti-mous...