

Product Datasheet

Gli-2 antibody (orb345484)

Description

Gli-2 antibody

Species/Host

Rabbit

Reactivity

Human, Rat

Conjugation

Unconjugated

Tested Applications

ELISA, IHC, WB

Immunogen

This affinity purified antibody was prepared from whole rabbit serum produced by repeated immunizations with a synthetic peptide corresponding to an internal region near amino acids 30-65 of human Gli-2 (isoform a).

Preservatives

0.01% (w/v) Sodium Azide

Form/Appearance

Liquid (sterile filtered)

Concentration

1.0 mg/mL

Storage

Store vial at -20° C or below prior to opening. This vial contains a relatively low volume of reagent (25 µL). To minimize loss of volume dilute 1:10 by adding 225 µL of the buffer stated above directly to the vial. Recap, mix thoroughly and briefly centrifuge to collect the volume at the bottom of the vial. Use this intermediate dilution when calculating final dilutions as recommended below. Store the vial at -20°C or below after dilution. Avoid cycles of freezing and thawing.

Note

For research use only

Application notes

This antibody has been tested for use in ELISA, immunohistochemistry and western blot. Specific conditions for reactivity should be optimized by the end user. See figure legend for expectations by western blot. Multiple splice variants have been reported for this protein a, b, g and d (133.3, 131.6, 88.1 and 86.4 kDa respectively). Detection of Gli-2 by western blot may be enhanced if nuclear extracts are used instead of whole cell lysates as the expression/abundance of Gli-2 is likely to be low. Furthermore, Gli-2 expression is likely to be developmentally regulated and induced, making it difficult to detect in whole tissue homogenates.

Isotype

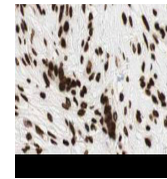
IgG

Clonality

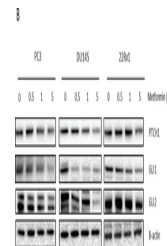
Polyclonal

Purity

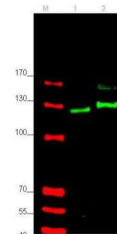
This affinity-purified antibody is directed against human Gli-2 protein. The product was affinity purified from monospecific antiserum by immunoaffinity purification. A BLAST analysis was used to suggest cross reactivity with Gli-2 from human and chimpanzee based on the immunizing



Biorbyt's Affinity Purified anti-Gli2 an...



Link between metformin and Hedgehog sign...



Western blot using Biorbyt's affinity pu...