

Product Datasheet

Gli-2 antibody (orb345479)

Description

Gli-2 antibody

Species/Host

Rabbit

Reactivity

Mouse

Conjugation

Unconjugated

Tested

ELISA, IHC, WB

Applications
Immunogen

This affinity purified antibody was prepared from whole rabbit serum produced by repeated immunizations with a synthetic peptide corresponding to amino acids from an internal region of Mouse Gli-2.

Preservatives

0.01% (w/v) Sodium Azide

Form/Appearance

Liquid (sterile filtered)

Concentration

1.02 mg/mL

Storage

Store vial at -20° C prior to opening. Aliquot contents and freeze at -20° C or below for extended storage. Avoid cycles of freezing and thawing. Centrifuge product if not completely clear after standing at room temperature. This product is stable for several weeks at 4° C as an undiluted liquid. Dilute only prior to immediate use.

Note

For research use only

Application notes

This antibody has been tested for use in ELISA, immunohistochemistry and western blot. Specific conditions for reactivity should be optimized by the end user. See figure legend for expectations by WB and IHC. Multiple splice variants have been reported for this protein.

Isotype

IgG

Clonality

Polyclonal

Purity

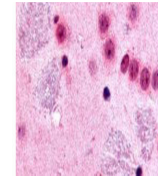
This affinity purified antibody is directed against mouse Gli-2 protein. The product was affinity purified from monospecific antiserum by immunoaffinity chromatography. A BLAST analysis was used to suggest cross-reactivity with Gli-2 from mouse and rat sources based on 100% sequence homology with the immunogen. Reactivity with Gli-2 from other sources is not known.

Uniprot ID
[Q8K0K3](#)
NCBI
[124487481](#)
Dilution Range

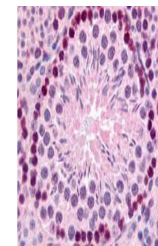
ELISA: 1:15,000 - 1:60,000, IHC: 2 µg/ml to 20 µg/ml, WB: 1:500 - 1:2,000

Expiration Date

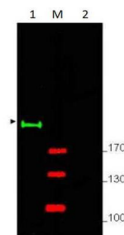
12 months from date of receipt



Biorbyt's Affinity Purified anti-mouse G...



Biorbyt's Affinity Purified anti-mouse G...



Western blot using Biorbyt's Affinity Pu...