

---

## Product Datasheet

### E2F-1 (phospho-S364) antibody (orb345473)

**Description**

E2F-1 (phospho-S364) antibody


**Species/Host**

Rabbit

**Reactivity**

Human, Mouse

**Conjugation**

Unconjugated

**Tested**

ELISA, IHC, WB

**Applications**
**Immunogen**

This affinity purified antibody was prepared from whole rabbit serum produced by repeated immunizations with a synthetic peptide corresponding to an internal region near amino acids 350-375 of Human E2F-1.

Biorbyt's  
Affinity  
Purified anti-  
E2F-1 p...

**Preservatives**

0.01% (w/v) Sodium Azide

**Form/Appearance**

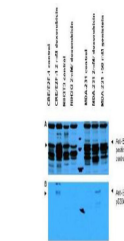
Liquid (sterile filtered)

**Concentration**

1.0 mg/mL

**Storage**

Store vial at -20° C prior to opening. Aliquot contents and freeze at -20° C or below for extended storage. Avoid cycles of freezing and thawing. Centrifuge product if not completely clear after standing at room temperature. This product is stable for several weeks at 4° C as an undiluted liquid. Dilute only prior to immediate use.



Western blot  
using  
Biorbyt's  
Affinity Pu...

**Note**

For research use only

**Application notes**

This affinity purified antibody has been tested for use in ELISA, immunohistochemistry and by western blot. Specific conditions for reactivity should be optimized by the end user. Expect a band approximately 47 kDa in size corresponding to phosphorylated E2F-1 by western blotting in the appropriate cell lysate or extract. Less than 0.5% reactivity is observed against the non-phosphorylated form of the immunizing peptide. This antibody is phospho specific for pS364 of E2F-1.

**Isotype**

IgG

**Clonality**

Polyclonal

**Purity**

This affinity purified antibody is directed against the phosphorylated form of human E2F-1 at the pS364 residue. The product was affinity purified from monospecific antiserum by immunoaffinity purification. Antiserum was first purified against the phosphorylated form of the immunizing peptide. The resultant affinity purified antibody was then cross adsorbed against the non-phosphorylated form of the