

Product Datasheet

Aurora B (phospho-pT232) antibody (orb345466)

Description

Aurora B (phospho-pT232) antibody

Species/Host

Rabbit

Reactivity

Human, Monkey

Conjugation

Unconjugated

Tested

ELISA, IF, IHC, WB

Applications

Immunogen

This affinity purified antibody was prepared from whole rabbit serum produced by repeated immunizations with a synthetic peptide corresponding to an internal region surrounding T232 of Human Aurora Kinase B protein.

Preservatives

0.01% (w/v) Sodium Azide

Form/Appearance

Liquid (sterile filtered)

Concentration

1.0 mg/mL

Storage

Store Phospho Specific Antibody at -20° C or below prior to opening. This vial contains a relatively low volume of reagent (25 µL). To minimize loss of volume dilute 1:10 by adding 225 µL of the buffer stated above directly to the vial. Recap, mix thoroughly and briefly centrifuge to collect the volume at the bottom of the vial. Use this intermediate dilution when calculating final dilutions as recommended below. Store the vial at -20°C or below after dilution. Avoid cycles of freezing and thawing.

Note

For research use only

Application notes

Anti-Aurora B pT232 Antibody is affinity-purified antibody has been tested for use in ELISA, immunohistochemistry, and by western blot. Expect a band approximately 39 kDa in size corresponding to Aurora Kinase B by western blotting in the appropriate cell lysate or extract. HeLa cell lysate can be used as a positive control.

Isotype

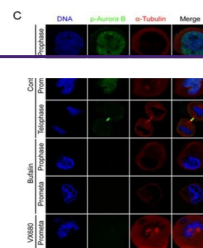
IgG

Clonality

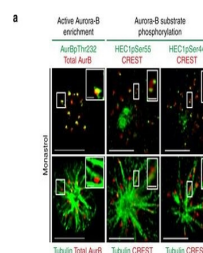
Polyclonal

Purity

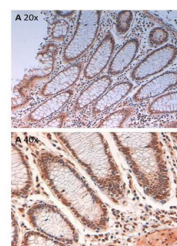
Aurora B Phospho pT232 Antibody is affinity purified antibody is directed against the phosphorylated form of human Aurora Kinase B at the pT232 residue. The product was affinity purified from monospecific antiserum by immunoaffinity purification. Antiserum was first



Bufalin prevents Aurora A recruitment to...



High Aurora-B activity promotes KT attac...



Immunohistochemistry of Rabbit Anti-Auro...