
Product Datasheet

Aurora B (phospho-pT232) antibody (orb345465)

Description

Aurora B (phospho-pT232) antibody

Species/Host

Rabbit

Reactivity

Human, Monkey

Conjugation

Unconjugated

Tested Applications

ELISA, IF, IHC, WB

Immunogen

This affinity purified antibody was prepared from whole rabbit serum produced by repeated immunizations with a synthetic peptide corresponding to an internal region surrounding T232 of Human Aurora Kinase B protein.

Preservatives

0.01% (w/v) Sodium Azide

Form/Appearance

Liquid (sterile filtered)

Concentration

0.87 mg/mL

Storage

Store Phospho Specific Antibody at -20° C prior to opening. Aliquot contents and freeze at -20° C or below for extended storage. Avoid cycles of freezing and thawing. Centrifuge product if not completely clear after standing at room temperature. This product is stable for several weeks at 4° C as an undiluted liquid. Dilute only prior to immediate use.

Note

For research use only

Application notes

Phospho pT232 Aurora B antibody has been tested for use in ELISA, immunohistochemistry, and by western blot. See below for specific protocol. Expect a band approximately 39 kDa in size corresponding to Aurora Kinase B by western blotting in the appropriate cell lysate or extract. HeLa cell lysate can be used as a positive control.

Isotype

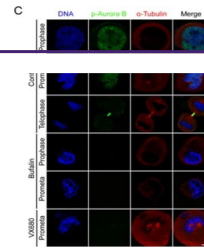
IgG

Clonality

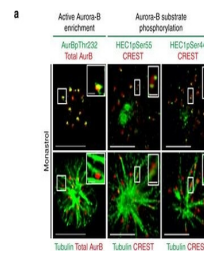
Polyclonal

Purity

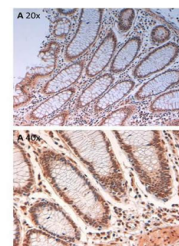
Anti-Phospho Aurora B pT232 affinity purified antibody is directed against the phosphorylated form of human Aurora Kinase B at the pT232 residue. The product was affinity purified from monospecific antiserum by immunoaffinity purification. Antiserum was first purified against the phosphorylated form of the immunizing peptide. The resultant affinity purified antibody was then cross-adsorbed against the non-



Bufalin prevents Aurora A recruitment to...



High Aurora-B activity promotes KT attac...



Immunohistochemistry of Rabbit Anti-Auro...