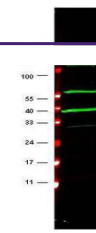


---

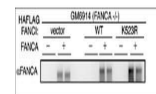
## Product Datasheet

### FANCA antibody (orb345459)

<b>Description</b>	FANCA antibody
<b>Species/Host</b>	Rabbit
<b>Reactivity</b>	Human
<b>Conjugation</b>	Unconjugated
<b>Tested Applications</b>	ELISA, WB
<b>Immunogen</b>	This affinity purified antibody was prepared from whole rabbit serum produced by repeated immunizations with a synthetic peptide corresponding to amino acids 995-1009 of human FANCA protein.
<b>Preservatives</b>	0.01% (w/v) Sodium Azide
<b>Form/Appearance</b>	Liquid (sterile filtered)
<b>Concentration</b>	2.2 mg/mL
<b>Storage</b>	Store vial at -20° C prior to opening. Aliquot contents and freeze at -20° C or below for extended storage. Avoid cycles of freezing and thawing. Centrifuge product if not completely clear after standing at room temperature. This product is stable for several weeks at 4° C as an undiluted liquid. Dilute only prior to immediate use.
<b>Note</b>	For research use only
<b>Application notes</b>	This affinity purified antibody has been tested for use in ELISA and by western blot. Specific conditions for reactivity should be optimized by the end user. Expect a main band at approximately 163 kDa in size corresponding to FANCA by western blotting in the appropriate cell lysate or extract or human tissue.
<b>Isotype</b>	IgG
<b>Clonality</b>	Polyclonal
<b>Purity</b>	This affinity-purified antibody is directed against human FANCA protein. The product was affinity purified from monospecific antiserum by immunoaffinity purification. A BLAST analysis was used to suggest cross reactivity with FANCA protein from human and chimpanzee based on 100% homology with the immunizing sequence. Reactivity against homologues from other sources is not known.
<b>Uniprot ID</b>	<b>O15360</b>
<b>NCBI</b>	<b>66880553</b>
<b>Dilution Range</b>	ELISA: 1:15,000 - 1:60,000, WB: 1:500 - 1:3,000



Western blot using Biorbyt's affinity pu...



Western blot using Biorbyt's affinity pu...