

---

## Product Datasheet

### SFRP1 antibody (orb345445)

**Description**

SFRP1 antibody

**Species/Host**

Rabbit

**Reactivity**

Human

**Conjugation**

Unconjugated

**Tested**

ELISA, IF, IHC, WB

**Applications**
**Immunogen**

SFRP1 antibody was prepared from whole rabbit serum produced by repeated immunizations with a synthetic peptide corresponding to a 12 aa region of human Sfrp1 protein.

**Preservatives**

0.01% (w/v) Sodium Azide

**Form/Appearance**

Liquid (sterile filtered)

**Concentration**

1.0 mg/mL

**Storage**

Store vial at -20° C or below prior to opening. This vial contains a relatively low volume of reagent (25 µL). To minimize loss of volume dilute 1:10 by adding 225 µL of the buffer stated above directly to the vial. Recap, mix thoroughly and briefly centrifuge to collect the volume at the bottom of the vial. Use this intermediate dilution when calculating final dilutions as recommended below. Store the vial at -20°C or below after dilution. Avoid cycles of freezing and thawing.

**Note**

For research use only

**Application notes**

This affinity purified antibody has been tested for use in ELISA, western blot, and IHC. This antibody is suitable for immunofluorescence. Specific conditions for reactivity should be optimized by the end user. Expect a band approximately 37 kDa in size corresponding to Sfrp1 by western blotting in the appropriate cell lysate or extract.

**Isotype**

IgG

**Clonality**

Polyclonal

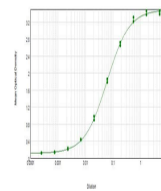
**Purity**

This affinity purified antibody is directed against human SFRP protein. The product was affinity purified from monospecific antiserum by immunoaffinity purification. A BLAST analysis was used to suggest reactivity with this protein from human based on 100% homology for the immunogen sequence. Expect cross reactivity with SFRP1 from mouse, rat and bovine sources as only a single amino acid residue change is found within the immunogen sequence (91% positive by BLAST). Cross reactivity with SFRP1 homologues from other sources has not been determined.

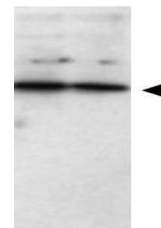


Biorbyt's Affinity Purified anti-Human S...

Anti-SFRP1 Sensitivity



ELISA results of purified Rabbit anti-SF...



Western blot using Biorbyt's Affinity Pu...