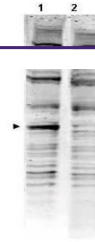


---

## Product Datasheet

### PACRG antibody (orb345443)

<b>Description</b>	PACRG antibody
<b>Species/Host</b>	Rabbit
<b>Reactivity</b>	Mouse
<b>Conjugation</b>	Unconjugated
<b>Tested Applications</b>	ELISA, WB
<b>Immunogen</b>	This affinity purified antibody was prepared from whole rabbit serum produced by repeated immunizations with a synthetic peptide corresponding to an internal region of Human PACRG protein.
<b>Preservatives</b>	0.01% (w/v) Sodium Azide
<b>Form/Appearance</b>	Liquid (sterile filtered)
<b>Concentration</b>	1.6 mg/mL
<b>Storage</b>	Store vial at -20° C prior to opening. Aliquot contents and freeze at -20° C or below for extended storage. Avoid cycles of freezing and thawing. Centrifuge product if not completely clear after standing at room temperature. This product is stable for several weeks at 4° C as an undiluted liquid. Dilute only prior to immediate use.
<b>Note</b>	For research use only
<b>Application notes</b>	This affinity purified antibody has been tested for use in ELISA and western blot.
<b>Isotype</b>	IgG
<b>Clonality</b>	Polyclonal
<b>Purity</b>	This affinity purified antibody is directed against human PACRG protein. The product was affinity purified from monospecific antiserum by immunoaffinity purification. A BLAST analysis was used to suggest reactivity with this protein from human, mouse and chicken based on 100% homology for the immunogen sequence. Cross reactivity with PACRG protein from zebrafish and rat may occur as this sequence only varies by one amino acid residue (94% homology). Expect reactivity with both splice variants of this protein. Cross reactivity with PACRG homologues from other sources has not been determined.
<b>Uniprot ID</b>	<a href="#">Q96M98</a>
<b>NCBI</b>	<a href="#">21040407</a>
<b>Dilution Range</b>	ELISA: 1:2,000 - 1:10,000, WB: 1:500 - 1:3,000
<b>Expiration Date</b>	12 months from date of receipt



Western blot using Biorbyt's Affinity Pu...