

---

## Product Datasheet

### Cyclin B1 (phospho-S126) antibody (orb345436)

**Description**

Cyclin B1 (phospho-S126) antibody

**Species/Host**

Rabbit

**Reactivity**

Human

**Conjugation**

Unconjugated

**Tested**

ELISA, IP, WB

**Applications**
**Immunogen**

This affinity purified antibody was prepared from whole rabbit serum produced by repeated immunizations with a synthetic peptide corresponding to an internal region near amino acids 115-140 of Human Cyclin B1 protein.

**Preservatives**

0.01% (w/v) Sodium Azide

**Form/Appearance**

Liquid (sterile filtered)

**Concentration**

2.01 mg/mL

**Storage**

Store vial at -20° C prior to opening. Aliquot contents and freeze at -20° C or below for extended storage. Avoid cycles of freezing and thawing. Centrifuge product if not completely clear after standing at room temperature. This product is stable for several weeks at 4° C as an undiluted liquid. Dilute only prior to immediate use.

**Note**

For research use only

**Application notes**

This affinity purified antibody has been tested for use in ELISA and western blot. Specific conditions for reactivity should be optimized by the end user. Expect a band ~ 48 kDa in size corresponding to Cyclin B1 by western blotting in the appropriate cell lysate or extract.

**Isotype**

IgG

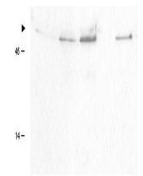
**Clonality**

Polyclonal

**Purity**

This product is an affinity purified antibody produced by immunoaffinity chromatography using phospho peptide coupled to agarose beads followed by solid phase adsorption(s) against non-phospho peptide and non-specific peptide to remove any unwanted reactivities. This antibody is specific for phosphorylated human Cyclin B1 protein at the pS126 residue. BLAST analysis indicates 100 % homology of the immunizing sequence with Cyclin B1 from human. Cross reactivity may occur with Cyclin B1 from rat, dog and chimpanzee as only a single amino acid change was detected within the

1 2 3 4 5



Western blot using Biorbyt's Affinity Pu...