

---

## Product Datasheet

### LDB2 antibody (orb345433)

**Description**

LDB2 antibody

**Species/Host**

Rabbit

**Reactivity**

Human, Mouse

**Conjugation**

Unconjugated

**Tested**

ELISA, IHC, WB

**Applications**
**Immunogen**

This affinity purified antibody was prepared from whole rabbit serum produced by repeated immunizations with a synthetic peptide corresponding to an internal region near aa 100-125 of Mouse LDB2.

**Preservatives**

0.01% (w/v) Sodium Azide

**Form/Appearance**

Liquid (sterile filtered)

**Concentration**

1.06 mg/mL

**Storage**

Store vial at -20° C prior to opening. Aliquot contents and freeze at -20° C or below for extended storage. Avoid cycles of freezing and thawing. Centrifuge product if not completely clear after standing at room temperature. This product is stable for several weeks at 4° C as an undiluted liquid. Dilute only prior to immediate use.

**Note**

For research use only

**Application notes**

This affinity purified antibody has been tested for use in ELISA, IHC, and by western blot. Specific conditions for reactivity should be optimized by the end user. Expect a band approximately 43 kDa in size corresponding to LDB2 by western blotting in the appropriate cell lysate or extract.

**Isotype**

IgG

**Clonality**

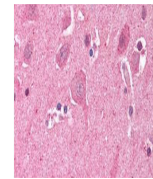
Polyclonal

**Purity**

This affinity purified antibody is directed against mouse LDB2. The product was affinity purified from monospecific antiserum by immunoaffinity purification. A BLAST analysis was used to suggest reactivity with this protein from mouse, human, chimpanzee, dog, rat and chicken based on 100% homology for the immunogen sequence. Cross reactivity with LDB2 homologues from other sources has not been determined.

**Uniprot ID**
[O55203](#)
**NCBI**
[116642898](#)
**Dilution Range**

ELISA: 1:5,000 - 1:20,000, IHC: 5 µg/ml, WB: 1:500 -



Biorbyt's Affinity Purified anti-LDB2 (C...



Western blot using Biorbyt's Affinity Pu...