

## Product Datasheet

### SH3BP2 (phospho-S427) antibody (orb345428)

## Description

SH3BP2 (phospho-S427) antibody

### Species/Host

Rabbit

### Reactivity

Human, Mouse, Rat

### Conjugation

Unconjugated

### Tested

ELISA, IP, WB

### Applications

### Immunogen

This affinity purified antibody was prepared from whole rabbit serum produced by repeated immunizations with a synthetic peptide corresponding to an internal region near aa 415-440 of Human SH3BP3 protein (SH3 Domain Binding Protein 2).

### Preservatives

0.01% (w/v) Sodium Azide

### Form/Appearance

Liquid (sterile filtered)

### Concentration

1.0 mg/mL

### Storage

Store vial at -20° C prior to opening. Aliquot contents and freeze at -20° C or below for extended storage. Avoid cycles of freezing and thawing. Centrifuge product if not completely clear after standing at room temperature. This product is stable for several weeks at 4° C as an undiluted liquid. Dilute only prior to immediate use.

### Note

For research use only

### Application notes

This affinity purified antibody has been tested for use in ELISA and by western blot. Specific conditions for reactivity should be optimized by the end user. Expect a band approximately 60 kDa in size corresponding to SH3BP2 by western blotting in the appropriate cell lysate or extract.

### Isotype

IgG

### Clonality

Polyclonal

### Purity

This product is an affinity purified antibody produced by immunoaffinity chromatography and is phospho specific for human pS427.

### Uniprot ID

**P78314**

### NCBI

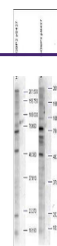
**170014703**

### Dilution Range

ELISA: 1:2,000 - 1:10,000, IP: 1:100, WB: 1:500 - 1:2,000

### Expiration Date

12 months from date of receipt



Western blot analysis is shown using Bio...