
Product Datasheet

NF2 (phospho-S518) antibody (orb345404)

Description

NF2 (phospho-S518) antibody

Species/Host

Rabbit

Reactivity

Mouse

Conjugation

Unconjugated

Tested

ELISA, IHC, WB

Applications
Immunogen

Human NF2 (Merlin) phospho-peptide corresponding to a region of the human protein surrounding S518 and conjugated to Keyhole Limpet Hemocyanin (KLH).

Preservatives

0.01% (w/v) Sodium Azide

Form/Appearance

Liquid (sterile filtered)

Concentration

1.0 mg/mL

Storage

Store vial at -20° C prior to opening. Aliquot contents and freeze at -20° C or below for extended storage. Avoid cycles of freezing and thawing. Centrifuge product if not completely clear after standing at room temperature. This product is stable for several weeks at 4° C as an undiluted liquid. Dilute only prior to immediate use.

Note

For research use only

Application notes

This phospho-specific polyclonal antibody was tested by immunoblotting and ELISA. By ELISA, the antibody was found to be reactive with the phosphorylated form of the immunizing peptide and minimally reactive with the non-phosphorylated form of the immunizing peptide. Immunoblotting will detect human and mouse NF2 (Merlin). Although not tested, this antibody is likely functional in Immunofluorescence, immunohistochemistry, and immunoprecipitation.

Isotype

IgG

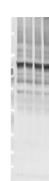
Clonality

Polyclonal

Purity

This affinity purified antibody is directed against human NF2 (Neurofibromatosis 2 gene product). The product was affinity purified from monospecific antiserum by immunoaffinity chromatography. Antiserum was first purified against the phosphorylated form of the immunizing peptide. The resultant affinity purified antibody was then cross-adsorbed against the non-phosphorylated form of the immunizing peptide. This phospho-specific polyclonal antibody is specific for phosphorylated pS518 of human NF2 (neurofibromatosis 2 gene product).

1 2 3 4

Affinity purified phospho-specific antib...

