

---

## Product Datasheet

### VSV-G antibody (orb345400)

**Description**

VSV-G antibody

**Species/Host**

Rabbit

**Conjugation**

Unconjugated

**Tested Applications**

ELISA, IF, IHC, WB

**Immunogen**

This affinity purified antibody was prepared from whole rabbit serum produced by repeated immunizations with a synthetic peptide corresponding aa 501-511 of vesicular stomatitis virus glycoprotein (VSV-G).

**Preservatives**

0.01% (w/v) Sodium Azide

**Form/Appearance**

Liquid (sterile filtered)

**Concentration**

1.19mg/mL

**Storage**

Store vial at -20° C prior to opening. Aliquot contents and freeze at -20° C or below for extended storage. Avoid cycles of freezing and thawing. Centrifuge product if not completely clear after standing at room temperature. This product is stable for several weeks at 4° C as an undiluted liquid. Dilute only prior to immediate use.

**Note**

For research use only

**Application notes**

This affinity purified antibody has been tested for use in ELISA and western blot. This product is suitable for immunofluorescence microscopy. Specific conditions for reactivity should be optimized by the end user. For standard indirect immunofluorescence assay we recommend paraformaldehyde fixation with detergent permeabilization of cells infected with VSV or transfected with the wild-type VSV-G protein. Staining is quite clean and specific for both sources of the G protein when diluted at least 1/200. At higher concentrations, a filamentous background staining may be present.

**Isotype**

IgG

**Clonality**

Polyclonal

**Purity**

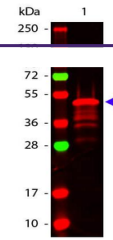
This affinity purified antibody is directed against VSV-G protein. The product was affinity purified from monospecific antiserum by immunoaffinity purification.

**Dilution Range**

ELISA: 1:50,000 - 1:100,000, IHC: 1:200 - 1:500, IF: 1:200 - 1:500, WB: 1:1,000 - 1:5,000

**Expiration Date**

12 months from date of receipt.



Western Blot of Rabbit anti-VSV-G antibo...