
Product Datasheet

6X HIS EPITOPE TAG antibody (orb345394)

Description

6X HIS EPI TOPE TAG antibody

Species/Host

Rabbit

Conjugation

Unconjugated

Tested Applications

DOT, ELISA, IHC, WB

Immunogen

This antibody was purified from whole rabbit serum prepared by repeated immunizations with 6X His epitope tag peptide H-H-H-H-H-H conjugated to KLH using maleimide.

Preservatives

0.01% (w/v) Sodium Azide

Form/Appearance

Liquid (sterile filtered)

Concentration

1.22 mg/mL

Storage

Store vial at -20° C prior to opening. Aliquot contents and freeze at -20° C or below for extended storage. Avoid cycles of freezing and thawing. Centrifuge product if not completely clear after standing at room temperature. This product is stable for several weeks at 4° C as an undiluted liquid. Dilute only prior to immediate use.

Note

For research use only

Application notes

Anti-6X His is optimally suited for monitoring expression of His-tagged fusion proteins. As such, anti-6X His/6X His can be used to identify fusion proteins that contain the 6X His epitope. The antibody recognizes the His tag fused either to the amino- or carboxy- termini of targeted proteins. This antibody has been tested by ELISA and western blotting against both the immunizing peptide and His-containing recombinant proteins. Although not tested, this antibody is likely functional for immunoprecipitation and immunocytochemistry.

Isotype

IgG

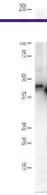
Clonality

Polyclonal

Purity

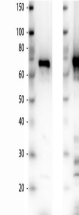
This affinity purified antibody is directed against the 6X His motif and is useful in determining its presence in various assays. This polyclonal anti-6X His tag antibody detects over-expressed proteins containing the 6X His epitope tag. To date, this antibody has reacted with all His tagged proteins so far tested. In western blotting of bacterial extracts, the antibody does not cross-react with endogenous proteins. The antibody recognizes the His-tag (His-His-His-His-His-His) fused to either the

M 1 2



Anti-6X His epitope tag polyclonal antib...

150 100 80 60 50 40 30 20



Western blot of Rabbit Anti-6xHIS Epitop...